



MANUFACTURER  
OF METAL ENCLOSURES



## PRODUCT CATALOGUE 2022

- INDUSTRIAL CABINETS • LOW-VOLTAGE RACK SYSTEM ENCLOSURES • FIBER OPTIC DISTRIBUTION FRAMES •
- POWER DISTRIBUTION BOXES •







## ***Table of Contents***

### **INTRODUCTION**

About Company.....	5
Glossary.....	6
Our technology.....	7
Applied solutions.....	8

### **New Products**

New products.....	12
-------------------	----

### **OUTDOOR CABINETS**

Selfstand.....	24
Outdoor rack 19" cabinets mounted on SK1 telecommunication well.....	24
Outer Fiber-optic Switch board.....	29
Wallmount.....	35
Mast cabinets.....	35
Mast cabinets with ventilation.....	37

### **INDOOR CABINETS**

Dedicated for FTTh network.....	40
Reinforced cabinets.....	51
Telecommunications cabinets.....	53
Residential telecommunications cabinets.....	59

### **RACK FIBER OPTIC DISTRIBUTION FRAMES**

Fixed.....	62
Trundle.....	65

### **ACCESSORIES**

Accessories.....	67
------------------	----

### **Cabinets' alphabetical list**



## About MANTAR Company



MANTAR is a family company from Poland. For two generations we have been specializing in the production of unbreakable and corrosion-resistant specialized cabinets that protect active and passive devices installed in ICT networks.

Since 1993, we design and manufacture metal cabinets for the cable television, telecommunications and computer networks. We work with companies in the production of devices from various industries for which we make metal enclosures, e.g. automating parking lots, alarm systems and controlling street lights. We focus on individual solutions that meet the specific needs of our customers.

Our own production plant with a modern machine park and a dedicated IT system supporting company management enables us to produce short series or even individual enclosures. In our design office, we develop cabinets tailored to the specific recipient, easy to assemble and use. Innovative ideas and solutions are also developed here which are patent-pending and have been revolutionized the market.

We use modern technologies in our products, including sheet with Magnelis® coating, joining sheets by clinching and many others.

We base our knowledge on many years of experience which is why we perfectly understand customers needs.

Over the past 28 years, our cabinets have become security synonymous and ease of use in the industry, and MANTAR is a leading manufacturer of fiber optic cabinets on the market.

## Glossary

**The cabinet symbol** consists of large printed letters denoting the type of the cabinet:

<b>DR</b>	Inspection door
<b>M</b>	cabinet patented by the MANTAR company with a construction resistant to burglary and devastation intended for installation inside buildings
<b>MZ</b>	M cabinet designed for outdoor installation
<b>PSN</b>	Fiber Optic wall-mounted switchboard for indoor use
<b>PS</b>	Fiber Optic Switch designed for mounting on rack mounts
<b>RSZ</b>	Fiber Optic outdoor switchgear
<b>SM</b>	Mast Cabinet designed for mounting on a mast, pole or wall
<b>SP</b>	Armored cabinet extremely resistant to burglary and internal devastation
<b>SRS</b>	Indoor Fiber Optic Distribution Cabinet
<b>SZK</b>	Outdoor Cabinet mounted on the SK1 telecommunication well
<b>TPR</b>	Simple internal wall cabinets

The symbol indicating the type of cabinet is followed by **a series of digits** indicating the external dimensions in centimeters: **height / width / depth**.

Dimensions are rounded to full centimeters.

The next large printed letters indicate items of equipment:

<b>144J</b>	Cabinet equipped with 144j commutation field, e.g. 72DX, 144SX
<b>DX</b>	Holes for mounting SC DX adapters
<b>L</b>	Handles under shelf PS1 plus shelf PS1 (for MZ or M)
<b>PK</b>	Cabinet equipped with commutation field
<b>PG</b>	Cabinet equipped with electric chokes, e.g. 13.5
<b>R</b>	Cabinet equipped with a 3 point closure as in the SZK
<b>ST</b>	Locked by padlock
<b>SX</b>	Holes for mounting SC SX adapters
<b>Wt</b>	Cabinet with ventilation
<b>WZM</b>	Cabinet closed with a safety lock reinforced door with angles with a metal cable supply
<b>Z</b>	Metal spare cable
<b>*</b>	Product available on request and available up to 3 weeks

In Rack-mounted Fiber-Optic switchgear dimensions are given in follow rule:

height 1...4U (U = 44,45mm)

wide 10" (10" = 255mm) or 19" (19" = 482mm)

then the number of holes for adapters and their type.

On the next places the mounting method:

<b>nz</b>	with lock
<b>St</b>	fixed without the possibility of ejecting
<b>W bp</b>	it is pulled out without guides
<b>W np</b>	it is pulled out with guides
<b>v1,2,3</b>	1,2,3..n version.

### ***Our technology***

Outdoors cabinets are made of DX51D + ZM200 zinc-aluminum-magnesium coated steel sheet known under the trade name Magnelis® of the company Accor Mittal.

Indoor cabinets are made of DC01 sheet metal with a thickness of 1mm to 2mm.

On request We can make cabinets made of aluminum sheet or stainless steel.

Coated sheets are joined by soldering with CuSi3 wire or clinching, which protects against corrosion at the joints.

We provide 5 years warranty for corrosion protection.

The lock is secured with 4-latch cylinder locks, for external cabinets hermetic locks, for cabinets with doors over 800x400 bolt-lever lock with hinged handle, three-point. Locks designed for a specific network have dedicated keys

Outdoors cabinets have cast polyurethane foam gasket which ensures protection against dust and water at IP65 level.

As standard, all cabinets are powder painted with polyester paint (100%) resistant to UV rays in RAL 7035 (light gray, thick structure)

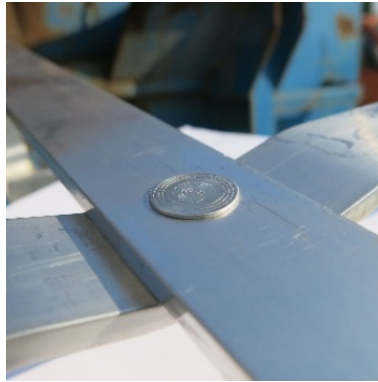
On request, we provide modifications of cabinets, tailored to the individual needs of customers.



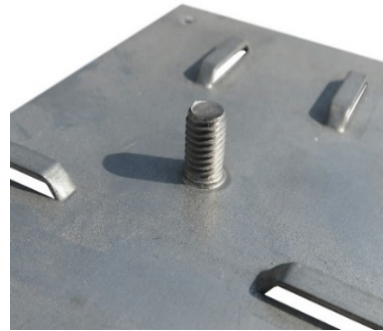
## Applied solutions #1



clinching



aluminum riveting



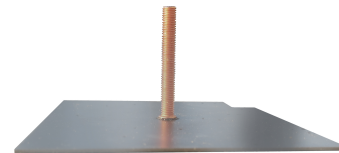
PEM



magnelis welding



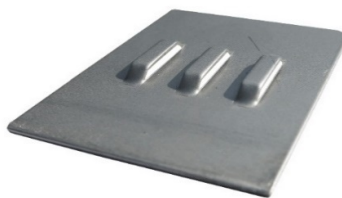
aluminium welding



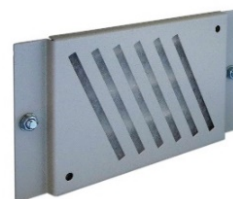
welded stud



pilot holder



cable management bridges



ventilation cover with filter mat

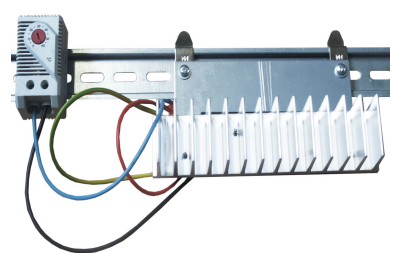
Applied solutions #2



extendable rack



LED lamp for SZK cabinets



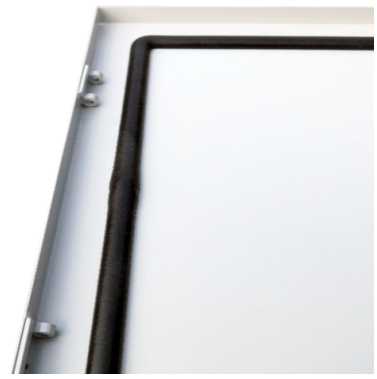
heating set



safe lock



holes to knock out



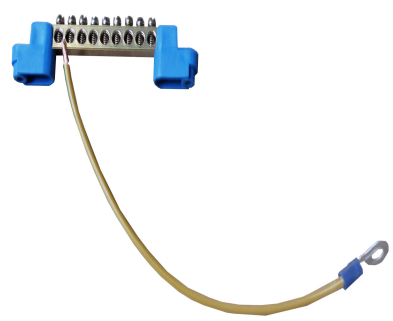
cast polyurethane gasket



strip brush



printing on metal



ground

### Applied solutions #3



ventilation kit



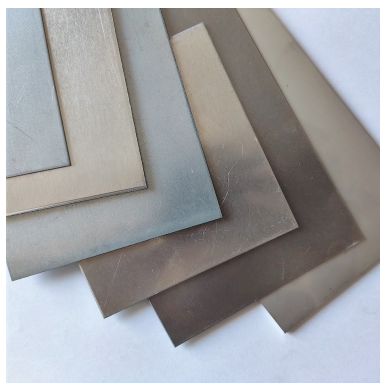
ventilation holes



cabinet with thermal insulation



RAL colours



various types of metal sheet



door with glass



laser cutting



rivet nut



metal cable organizer

### ***New products***

Our own design office allows us to quickly respond to changing market needs and flexibly adjust our offer to them. We create innovative projects and include them to our permanent offer and provide innovative individual solutions, tailored to the needs of our clients. Competent, qualified team helps to find satisfactory solutions that meet specific requirements and standards.

Achieving the highest quality of products and services is our priority. We present the result of our work in latest version of the catalog. Find out our new products familiar and tested models in a constantly improved version.



## Standing indoor cabinet

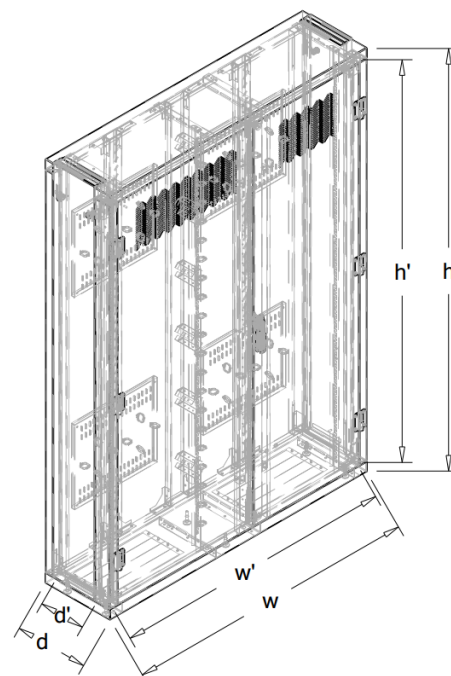
### DESCRIPTION:

Standing telecommunications cabinet.

- Material: steel sheet 1mm thick,
- Perforated door, closed with a 3-point bolt lock with a padlock bolt, swing handle,
- No back wall,
- The interior of the cabinet divided into compartment,
- Outside compartments equipped with rack handles allow for mounting guides,
- Cabinet equipped with organizers and handles for cable management.

The cabinet is made for individual order.

- Possibility of making in other dimensions.
- Possibility to modify the interior.



Symbol	External dimensions (mm)			Internal dimensions (mm)		
	height (h)	width (w)	depth (d)	height (h')	width (w')	depth (d')
<b>SWS 42U 19" 140x35*</b>	2004	1400	350	1869	1286	204



**SWS 42U 19" 140x35**



## "SZK" Cabinets with an additional module

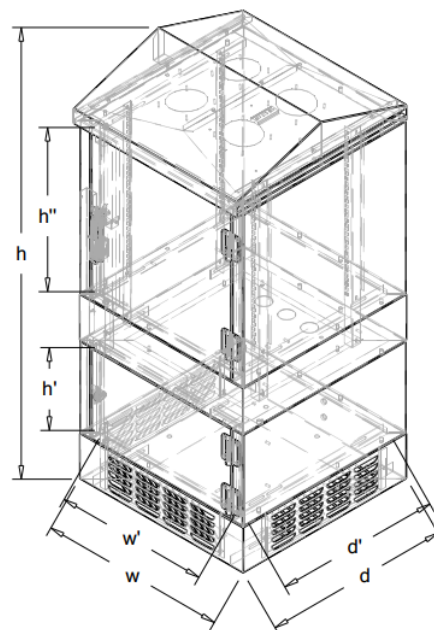
### DESCRIPTION:

Cabinets for assembly on SK1 channel sump.

- Made of sheet metal with Magnelis coating 1.5mm thick, plinth made of sheet metal with a Magnelis coating 2 mm thick, 150 mm high, ventilation holes from three sides, covered with a filter mat,
- IP54 protection and mechanical resistance IK10 ratings,
- Upper part, locked with a 3-point bolt lock with a padlock bolt, swing handle,
- Lower part, locked with a hermetick lock,
- 2 pairs of 19" rack - adjustable distance between the front and rear pair from 260 mm to 430 mm,
- Lower module 6U dedicated for cable storage or accumulator.

### Additional equipment:

- Heating set with thermostat,
- Heating set consisting of a CSL028 250W semiconductor blower controlled by an electronic hygrotherm ETF 012,
- A set for ventilation of cabinet with a thermostat,
- Floor plate with 3 holes Ø50 for self-breaking,
- 19" 1U 340 mm shelf,
- PS 19" 1U SC SX / DX pull-out,
- PS 19" 2U SC DX pull-out,
- 3U voltage distribution panel.



new products

Symbol	External dimmensions (mm)			Internal dimmensions (mm)		
	height (h)	width (w)	depth (d)	height (h')	width (w')	depth (d')
<b>SZK 18U 19" (12U+6U)*</b>	1312	610	633	532+268	503	569



**SZK 18U 19" (12U+6U)**

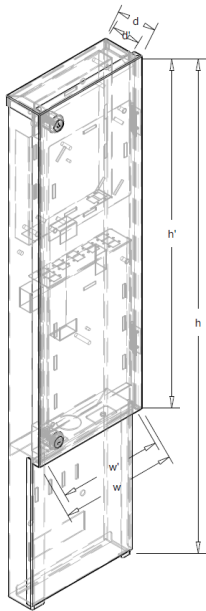
# Outdoor Fiber Optic Distribution Frame - 12J

DESCRIPTION:

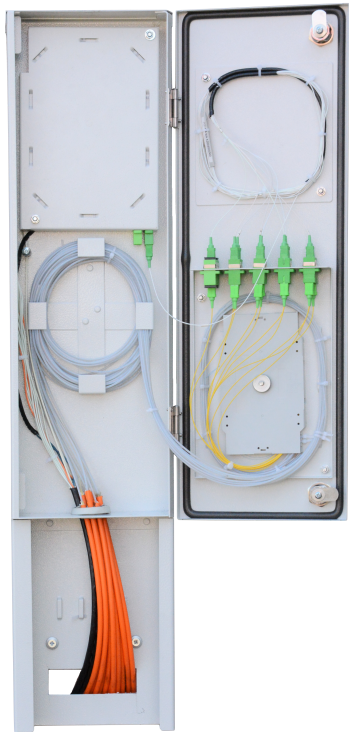
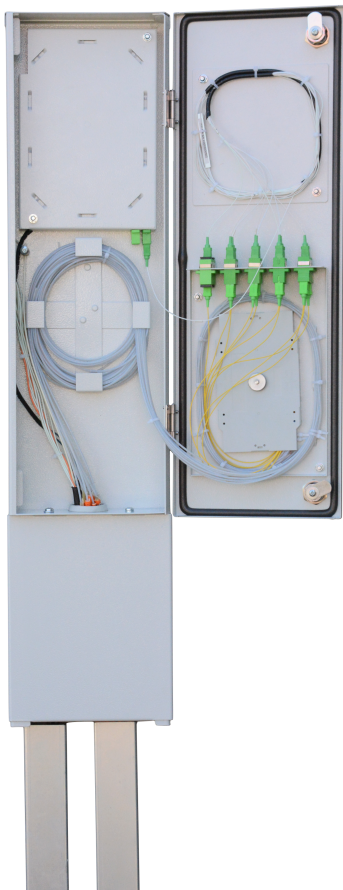
Outdoor cabinet designed for FTTh networks where a simple construction allows for any arrangement of optical fibers.

- Body made of sheet metal with Magnelis coating 1mm thick,
- IP65 category and mechanical resistance IK10,
- In the upper part of the cabinet there is a separate space for supplying the source cable, together with the field for the 2J signal source and the tray of welds,
- The upper part of the door has space for optical splitter and metal holder for storage,
- In the bottom part of the door, a commutation field with a capacity of 12J (12 holes for SC SX adapters) with a place for a 12J splice tray,
- Cable entry plugged with a multi-hole gland,
- Door closed with 2 airtight cylinder locks (dedicated key code),
- Poured polyurethane gasket on the door,
- Removable panels allow for convenient welding at a distance from the cabinet,
- Cabinet designed for wall mounting.

On request, cabinet can be made in Duplex version.



Symbol	External dimmensions (mm)			Internal dimmensions (mm)		
	height (h)	width (w)	depth (d)	height (h')	width (w')	depth (d')
<b>RSZ-79/18/6 12J</b>	793	188	65	544	165	57



**RSZ-79/18/6 - 12J**

## Mast Cabinet 19" with glass

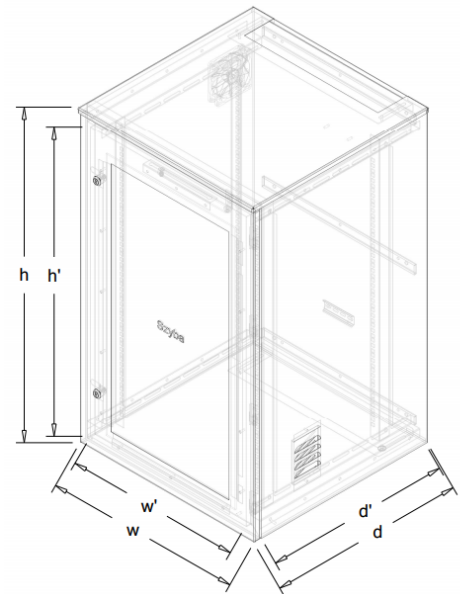
### DESCRIPTION:

Hermetic cabinet designed for mounting on masts and poles with a polyurethane gasket.

- Dedicated for high dustiness spaces,
- Made of sheet metal with Magnelis coating with a thickness of 1,5mm,
- Degree of protection IP53,
- 4mm thick tempered glass,
- Closed with two hermetic locks,
- The cabinet has additional body reinforcements in place of mounting holes,
- Cable entry from the top and bottom of the cabinet covered with a foam seal,
- Ventilation holes with the possibility of mounting a ventilation kit,
- Two sets of vertical rack handles 19" 18U standard (full-depth fastening).

### Additional equipment:

- Ventilation kit,
- Heating kit,
- Rackmount voltage distribution panel 19" 3U,
- Shelf 19" 1U deep 340mm(rack-mounted)
- A set of pole holders 558mm (3 pcs),
- PS 19" 1U 24 x SC Duplex/Simplex fixed or pull-out.



new products

Symbol	External dimmensions (mm)			Internal dimmensions (mm)		
	height (h)	width (w)	depth (d)	height (h')	width (w')	depth (d')
<b>SM-100/60/60 18U*</b>	1002	603	606	923	535	574



**SM-100/60/60 18U**

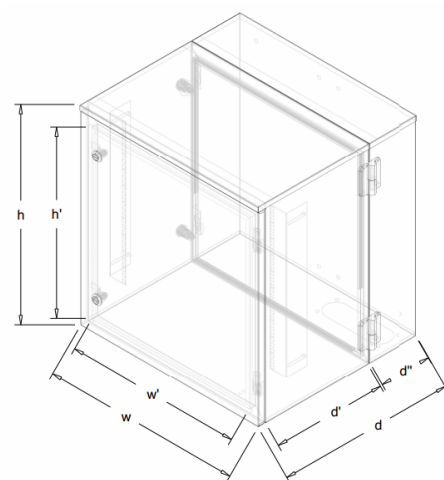
## Mast Cabinet 19" two-section

### DESCRIPTION:

Hermetic cabinet designed for mounting on masts and poles with a polyurethane gasket.

- Cabinet is a mechanical cover for telecommunication equipment,
- Perfect choice for installations that require frequent access to installed devices,
- Closed with hermetic locks, two at the front (main door) and two on one side of the cabinet.
- Protection IP55 and mechanical resistance IK10 ratings,
- Cable entry plugged with a multi-hole gland,
- Equipped with 19" 6U Racks mounted vertically.

Made for individual order.



Symbol	External dimensions (mm)			Internal dimensions (mm)		
	height (h)	width (w)	depth (d)	height (h')	width (w')	depth (d')
<b>SM-60/55/50 10U*</b>	601	560	504	521	494	148+313



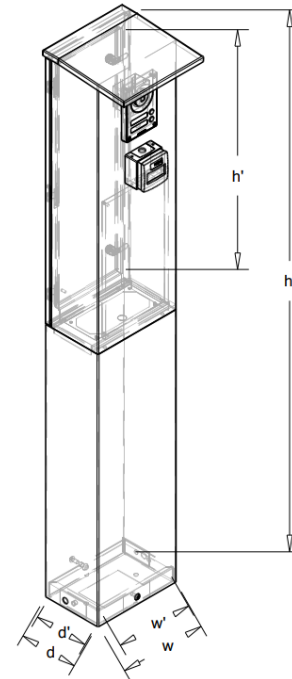
**SM-60/55/50 10U**

# Emergency Column

DESCRIPTION:

Outdoor cabinet with a modular construction for security communication system, made for a dedicated customer computer equipment.

- Made of 1.0mm steel sheet with Magnelis coating,
- Body protection IP65,
- Possibility to make made with doors at the front and back,
- Closed with two hermetic locks,
- Installation of elements on the door of the column or on the mounting plate,
- Powder coated, thick structure - orange (RAL 2003),
- Cabinet marked with the text "SOS", silk-screen printing,
- Possibility to place on a pedestal dug in the ground,
- The emergency communication system provides users with two-way emergency communication with the operator,
- Used in the highway engineering, railway, and public spaces, as well as industrial safety.



Symbol	External dimmensions (mm)			Internal dimmensions (mm)		
	height (h)	width (w)	depth (d)	height (h')	width (w')	depth (d')
<b>Kolumna Alarmowa*</b>	1852	300	250	871	238	211



Kolumna alarmowa

new products



## Standing operator console

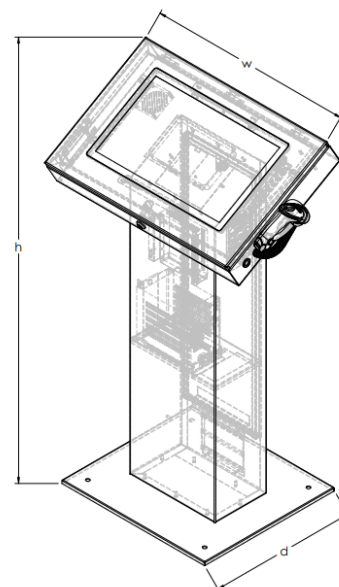
### DESCRIPTION:

A standing operator console intended for computer installation, control and measurement equipment or visualization production and technological processes.

- Material: steel sheet 1.5mm thick,
- The operator's part and the foot closed with hermetic locks,
- Adapted for mounting a computer, barcode reader and UPS (these elements are not included in the console equipment),
- Used as an operator station at automated production lines, warehouses or machining centers.

### To order:

- possibility of making in other dimensions,
- possibility to modify or make additional holes.



Symbol	external dimensions (mm)		
	height	width	depth
<b>Pulpit operatorski*</b>	1255	700	500



**Pulpit operatorski**

## Hanging operator console

### DESCRIPTION:

A hanging operator console intended for computer installation, control and measurement equipment or visualization production and technological processes.

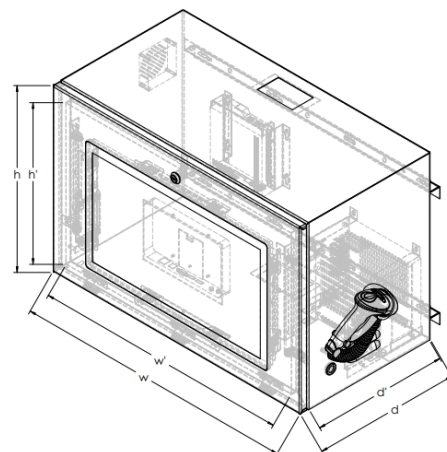
- Material: steel sheet 1.0mm thick,
- Closed with hermetic locks,
- Adapted for mounting a computer, barcode reader and UPS (these elements are not included in the console equipment),
- Used as an operator station at automated production lines, warehouses or machining centers.

### Additional equipment:

- A set of pole holders (2 pcs).

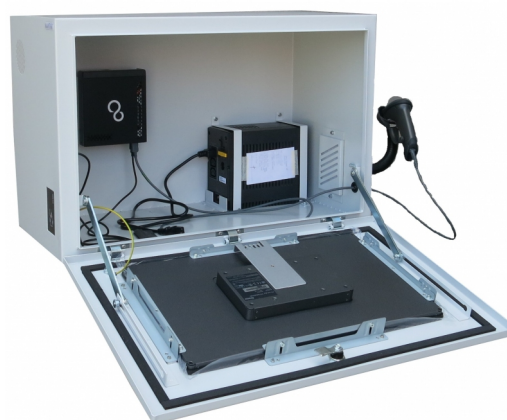
### To order:

- possibility of making in other dimensions,
- possibility to modify or make additional holes.



new products

Symbol	External dimensions (mm)			Internal dimensions (mm)		
	height (h)	width (w)	depth (d)	height (h')	width (w')	depth (d')
<b>Pulpit operatorski wiszący*</b>	460	705	372	395	640	347



Pulpit operatorski wiszący

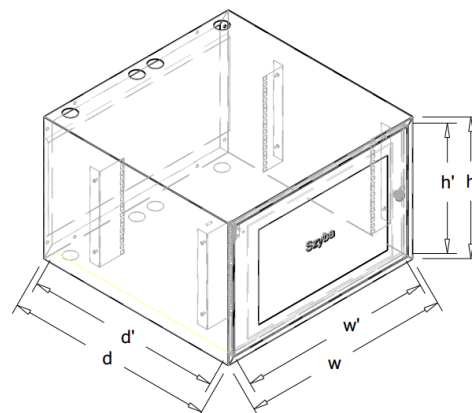
## TPR Cabinet with glass

### DESCRIPTION:

- Door with 4mm thick tempered glass,
- Closing by 4-ratchet cylinder lock,
- With 4 holes (Ø38 / 29- plugged) from above and below for cable entry,
- Equipped with 19" 6U rack mounted vertically,
- Material: steel sheet thickness 1mm.

On request we can:

- made it in other dimensions,
- do any number and arrangement of blinded holes (Ø29, Ø38, Ø48) or rectangular holes.



Symbol	External dimensions (mm)			Internal dimensions (mm)		
	height (h)	width (w)	depth (d)	height (h')	width (w')	depth (d')
TPR-40/60/60	400	600	601	353	546	575



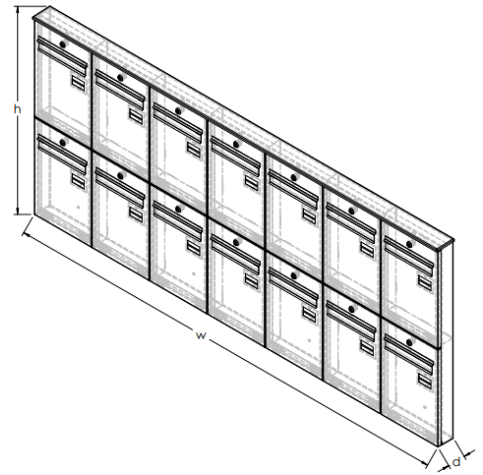
TPR-40/60/60 6U

## Block of mailboxes

### DESCRIPTION:

Block of outdoor mailboxes.

- Block of 14 individual mailboxes,
- Material: aluminum sheet and steel sheet with Magnelis coating,
- Powder coated in anthracite colour (RAL 7016) with a thick structure,
- Individual boxes closed with hermetic locks with different key code,
- Suitable for receiving correspondence up to the size of C4 envelope,
- Place for numbering or name tags,
- Construction ensures the security of correspondence,
- Boxes suitable for outdoor use, resistant to moisture and other unfavorable factors.



new products

Symbol	external dimensions (mm)		
	height	width	depth
Skrzynka na listy*	988	2305	98



Blok skrzynek na listy

## Ventilation panel (4 fans)

### DESCRIPTION:

Ventilation panel with 4 fans and thermostat, for cooling devices in 19" rack cabinets.

-Designed for installation on rack mounts in 19" cabinets with depth more than 400mm,

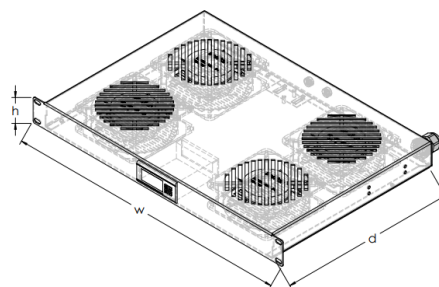
-Made of 1.5mm thick steel sheet,

-Equipped with 4 fans,

-Thermostat temperature control via LCD panel,

-Panel has a digital thermostat with an LCD display, which allows to set the temperature (fans will turn on after exceeded the temperature),

-Possibility to order panel equipped with 2 fans for smaller cabinets.



Symbol	external dimensions (mm)		
	height	width	depth
<b>PW 1U 19" 4 wentylatory</b>	1U	19"	310



**PW 1U 19" 4 wentylatory**





### **OUTDOOR CABINETS DEDICATED FOR FTTx NETWORK**

Outdoor MANTAR cabinets dedicated to the construction of FTTx networks are advanced solutions for increased resistance to adverse weather conditions, such as moisture, heavy rain, frost, etc. and mechanical damage.

MANTAR outdoor cabinets have a tightness of IP 66 rating, and mechanical resistance IK10.

Cabinet bodies are made of the most corrosion-resistant material currently available on the market - Magnelis steel sheets. The advantage of this solution is the higher resistance of non-elements to scratches and their ability to self-regenerate.

A modern system of joining metal sheets (soldering with CuSi3 wire or clinching) additionally protects against the appearance of rust at critical points.

Cabinets are designed for mounting on sewer manholes and are standard equipped with 19" rack holders and can be equipped with ventilation sets, heating sets, voltage distribution panels, fiber optic switches and shelves.

The lockers are fitted with locks certified by the Institute of Precision Mechanics.

## "SZK" 19" Cabinets

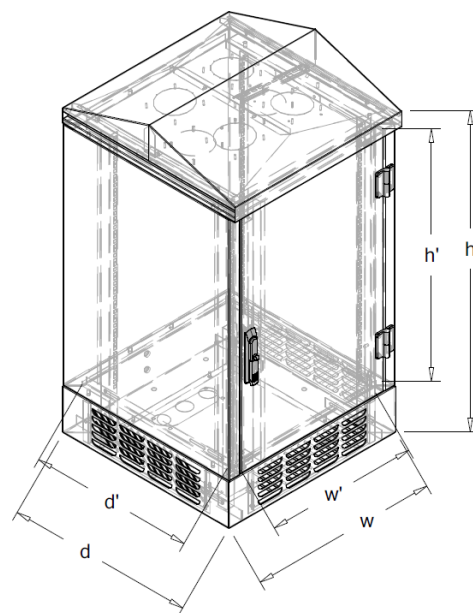
### DESCRIPTION:

Cabinets for assembly on SK1 channel sump.

- Made of sheet metal with Magnelis coating 1.5mm thick, plinth made of sheet metal with a Magnelis coating 2 mm thick, 150 mm high, ventilation holes from three sides, covered with a filter mat,
- IP54 category and mechanical resistance IK10 ratings (confirmed by test report No. B/2020/34),
- Lockable with a 3-point bolt lock with a padlock bolt, swing handle,
- 2 pairs of 19" rack - adjustable distance between the front and rear pair from 260 mm to 430 mm, distance between the front of the body and the first pair of racks from 56mm to 174mm.

### Additional equipment:

- Heating set with thermostat,
- Heating set consisting of a CSL028 250W semiconductor blower controlled by an electronic hygrotherm ETF 012,
- A set for ventilation of cabinet with a thermostat,
- Floor plate with 3 holes Ø50 for self-breaking,
- 19" 1U 340 mm shelf,
- PS 19" 1U SC SX / DX pull-out,
- PS 19" 2U SC DX pull-out,
- 3U voltage distribution panel.



Symbol	External dimmensions (mm)			Internal dimmensions (mm)		
	height (h)	width (w)	depth (d)	height (h')	width (w')	depth (d')
<b>SZK 12U 19"</b>	864	610	610	531	496	428
<b>SZK 18U 19"</b>	1134	610	610	799	496	429
<b>SZK 24U 19"*</b>	1420	610	610	1086	496	425
<b>SZK 30U 19"</b>	1686	610	610	1352	496	425
<b>SZK 42U 19"*</b>	2220	610	610	1883	496	425



**SZK-18U 19"**

## "SZK" 19" dual access Cabinets

### DESCRIPTION:

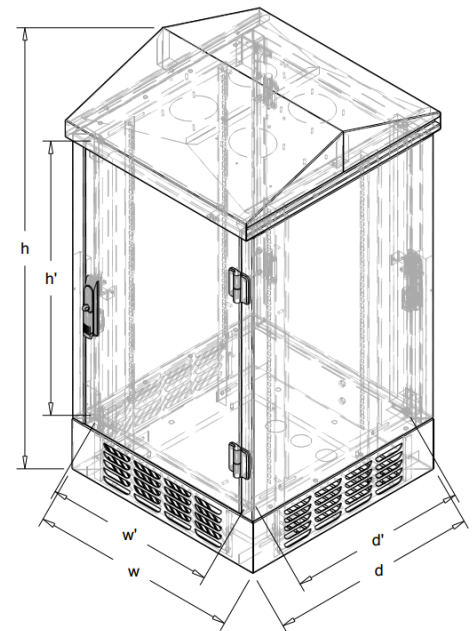
Cabinets for assembly on SK1 channel sump.

- Made of sheet metal with Magnelis coating 1.5mm thick, plinth made of sheet metal with a Magnelis coating 2 mm thick, 150 mm high, ventilation holes from three sides, covered with a filter mat,
- IP54 category and mechanical resistance IK10 ratings,
- Cabinet is closed at the front and at the back, doors include a 3-point bolt lock with a pin for a padlock, a hinged handle,
- 2 pairs of 19" rack - adjustable distance between the front and rear pair from 260 mm to 430 mm, distance between the front of the body and the first pair of racks from 56mm to 174mm.,

On request, cabinet can be made of Aluminum.

### Additional equipment:

- Heating set with thermostat,
- Heating set consisting of a CSL028 250W semiconductor blower controlled by an electronic hygrotherapy ETF 012,
- A set for ventilation of cabinets with a thermostat,
- Floor plate with 3 holes Ø50 for self-breaking,
- 19" 1U 340 mm shelf,
- PS 19" 1U SC SX / DX extendable,
- PS 19" 2U SC DX pull-out,
- 3U voltage distribution panel.



outdoor cabinets

Symbol	External dimmensions (mm)			Internal dimmensions (mm)		
	height (h)	width (w)	depth (d)	height (h')	width (w')	depth (d')
<b>SZK 18U 19" dual</b>	1138	610	610	801	503	533
<b>SZK 30U 19" dual</b>	1703	610	800	1336	503	723



**SZK-30U 19" dual**

## "SZK" modular Cabinets

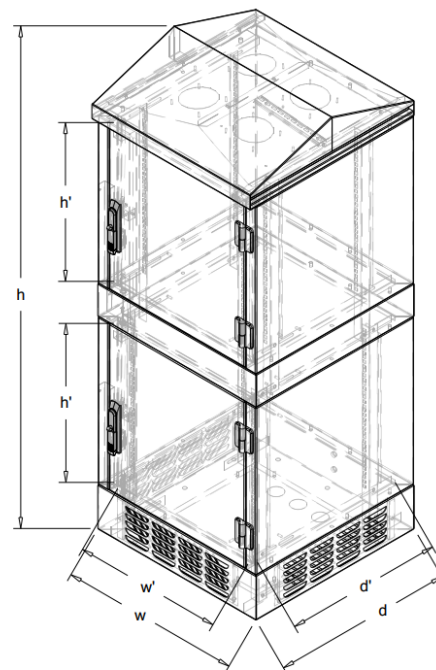
### DESCRIPTION:

Cabinets for assembly on SK1 channel sump.

- Made of sheet metal with Magnelis coating 1.5mm thick, plinth made of sheet metal with a Magnelis coating 2 mm thick, 150 mm high, ventilation holes from three sides, covered with a filter mat,
- IP54 category and mechanical resistance IK10 ratings (confirmed by test report No. B/2020/34),
- Upper and lower part connected with a 150mm high grommet,
- Lockable with a 3-point bolt lock with a padlock bolt, swing handle,
- 2 pairs of 19" rack - adjustable distance between the front and rear pair from 260mm do 420mm, distance between the front of the body and the first pair of racks from 55mm do 125mm,

### Additional equipment:

- Heating set with thermostat,
- Heating set consisting of a CSL028 250W semiconductor blower controlled by an electronic hygrotherapy ETF 012,
- A set for ventilation of cabinets with a thermostat,
- Floor plate with 3 holes Ø50 for self-breaking,
- 19" 1U 340 mm shelf,
- PS 19" 1U SC SX / DX pull-out,
- PS 19" 2U SC DX pull-out,
- 3U voltage distribution panel.



Symbol	External dimmensions (mm)			Internal dimmensions (mm)		
	height (h)	width (w)	depth (d)	height (h')	width (w')	depth (d')
<b>SZK 24U 19" (12U+12U)</b>	1535	610	610	533+533	503	570
<b>SZK 30U 19" (18U+12U)</b>	1805	610	610	533+803	503	570
<b>SZK 36U 19" (18U+18U)</b>	2075	610	610	803+803	503	570



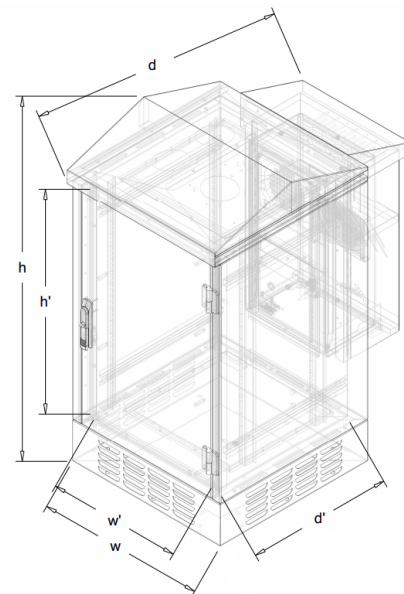
**SZK-36U (18U+18U)**

## "SZK" air conditioning Cabinets

### DESCRIPTION:

Cabinets for assembly on SK1 channel sump.

- Made of sheet metal with Magnelis coating 1.5mm thick, plinth made of sheet metal with a Magnelis coating 2 mm thick, 150 mm high, ventilation holes from three sides, covered with a filter mat,
- Suitable and safe environment for your devices,
- IP65 category and mechanical resistance IK10 (confirmed by test report No. B/2016/356),
- The housing walls have a 30mm expansion gap (double walls),
- A polyurethane gasket is poured on the door,
- Lockable with a 3-point bolt lock with a padlock bolt, swing handle,
- 2 pairs of 19" rack - adjustable distance between the front and rear pair from 290mm do 420mm, distance between the front of the body and the first pair of racks from 55mm do 125mm,
- 640W air conditioner (Voltage: 230 V),
- 3U voltage distribution panel,
- A heating set consisting of a CSL028 250W semiconductor blower controlled by an electronic hygrotherapy ETF 012,
- Additional fans controlled by a thermostat mounted in the roof,
- On request, cabinet can be made in other dimensions or made of Aluminum.



outdoor cabinets

### Additional equipment:

- 19" 1U 340 mm shelf,
- PS 19" 1U SC SX / DX pull-out,
- PS 19" 2U SC DX pull-out.

Symbol	External dimmensions (mm)			Internal dimmensions (mm)		
	height (h)	width (w)	depth (d)	height (h')	width (w')	depth (d')
SZK 18U 19" z klimatyzatorem	1160	610	890	804	488	529
SZK 30U 19" z klimatyzatorem	1692	610	890	1336	488	529



**SZK-18U z klimatyzatorem**

## SZK" Cabinet with thermal isolation

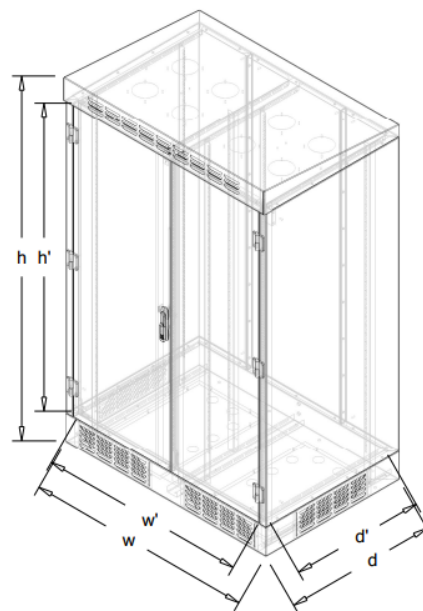
### DESCRIPTION:

Cabinets for assembly on SK1 channel sump.

- Made of sheet metal with Magnelis coating 1.5mm thick, plinth made of sheet metal with a Magnelis coating 2 mm thick, 150 mm high, ventilation holes from three sides, covered with a filter mat,
- IP54 category and mechanical resistance IK10 ratings,
- Lockable with a 3-point bolt lock with a padlock bolt, swing handle,
- 2 pairs of 19" rack handles as standard, mounted vertically along the entire depth of the cabinet,
- Cabinet isolated with Aluthermo Quattro foil with a permeability of  $\lambda$  0,040 W/m.

### Additional equipment:

- Heating set with thermostat,
- Heating set consisting of a CSL028 250W semiconductor blower controlled by an electronic hygrotherm ETF 012,
- A set for ventilation of cabinet with a thermostat,
- Floor plate with 3 holes Ø50 for self-breaking,
- 19" 1U 340 mm shelf,
- PS 19" 1U SC SX / DX pull-out,
- PS 19" 2U SC DX pull-out,
- 3U voltage distribution panel.



Symbol	External dimmensions (mm)			Internal dimmensions (mm)		
	height (h)	width (w)	depth (d)	height (h')	width (w')	depth (d')
<b>SZK 36U 192/120/80*</b>	1904	1200	814	1601	1091	726



**SZK 36U 192/120/80**

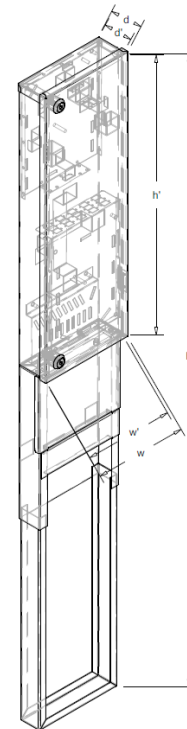


## Outdoor Fiber Optic Distribution Frame - 15J

### DESCRIPTION:

Outdoor cabinet designed for FTTh networks where a simple construction allows for any arrangement of optical fibers.

- Body made of sheet metal with Magnelis coating 1mm thick,
- The pedestal made of sheet metal with a Magnelis coating 1.5mm thick, designed for mounting by digging into the ground to a depth of 60cm,
- IP65 category and mechanical resistance IK10 ratings (confirmed by test report No. B / 2016/55)
- In the upper part of the cabinet there is a separate space for supplying the source cable, together with the field for the 2J signal source and the tray of welds,
- The upper part of the door has space for optical splitter and plastic holders for storage,
- Commutation field with a capacity of 15J (15 holes for SC Sx adapters)
- On the bottom part of the door, a dedicated splice tray is located,
- Separate storage space for client cables at the bottom of the cabinet,
- Door closed with 2 airtight cylinder locks (dedicated key code),
- Poured polyurethane gasket on the door,
- The ground part of the cabinet after mounting the pedestal is 65cm.



Symbol	External dimmensions (mm)			Internal dimmensions (mm)		
	height (h)	width (w)	depth (d)	height (h')	width (w')	depth (d')
<b>RSZ-125/18/6 15J</b>	1249	186	65	543	167	57



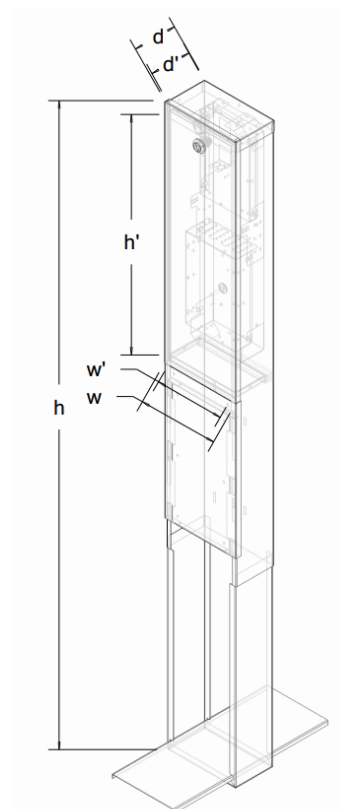
**RSZ-125/18/6 - 15J**

## Outdoor Fiber Optic Distribution Frame - 16J

### DESCRIPTION:

Outdoor cabinet designed for FTTh networks where a simple construction allows for any arrangement of optical fibers.

- Body made of sheet metal with Magnelis coating, thickness 1.0mm,
- The pedestal made of sheet metal with a Magnelis coating, thickness 1.5mm, is designed for mounting by digging into the ground to a depth of 60cm,
- Fully removable door locked with 1 hermetic cylinder lock (dedicated key code),
- Poured polyurethane gasket on the door,
- In the upper part of the cabinet two specially profiled inserts designed for mounting optical network elements such as adapters, splice trays,
- Insert in the operator part with a capacity of 2J (2 holes for SC Simplex adapters) and a client with a capacity of 16J (16 holes for SC Simplex adapters),
- Insert mounting bracket on the back wall also acts as cable / coil holder,
- The upper part of the cabinet has IP65 category obtained by separating it from the lower part with a sealing insert, mounted after laying the optical fibers,
- The ground part of the cabinet after mounting the pedestal is 86cm.



Symbol	External dimensions (mm)			Internal dimensions (mm)		
	height (h)	width (w)	depth (d)	height (h')	width (w')	depth (d')
<b>RSZ-146/18/10 16J</b>	1459	185	103	557	160	95



**RSZ-146/18/10 - 16J**

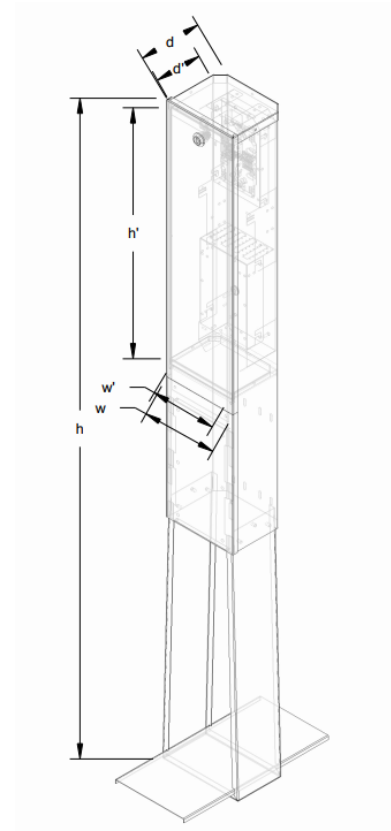


## Outdoor Fiber Optic Distribution Frame - 24J

### DESCRIPTION:

Outdoor cabinet designed for FTTH networks where a simple construction allows for any arrangement of optical fibers.

- Body made of sheet metal with Magnelis coating, thickness 1.5mm,
- The pedestal made of sheet metal with a Magnelis coating, thickness 1.5mm, is designed for mounting by digging into the ground to a depth of 60cm,
- In the upper part of the cabinet two specially profiled inserts designed for mounting optical network elements such as adapters, splice trays,
- Insert in the operator part with a capacity of 2J (2 holes for SC Simplex adapters) and a client with a capacity of 16J (16 holes for SC Simplex adapters),
- Inserts with the possibility of tilting and complete disassembly facilitate the work,
- Insert mounting bracket on the back wall also acts as cable / coil holder,
- Completely removable door locked with 1 hermetic cylinder lock (dedicated key code),
- The upper part of the cabinet has IP65 category obtained by separating it from the lower part with a sealing insert, mounted after laying the optical fibers,
- The ground part of the cabinet after mounting the pedestal is 100cm.



outdoor cabinets

Symbol	External dimmensions (mm)			Internal dimmensions (mm)		
	height (h)	width (w)	depth (d)	height (h')	width (w')	depth (d')
<b>RSZ-160/18/14 24J</b>	1593	185	148	611	160	140



**RSZ-160/18/14 - 24J**

## Outdoor Fiber Optic Distribution Frame - 36J

### DESCRIPTION:

Outdoor cabinet designed for FTTh networks where a simple construction allows for any arrangement of optical fibers.

-Body and pedestal made of sheet metal with a Magnelis coating, 1.5mm thick, the pedestal designed for mounting by digging into the ground to a depth of 60cm,

-In the upper part of the cabinet two specially profiled inserts designed for mounting optical network elements such as adapters, splice trays,

-Insert in the operator part with a capacity of 6J (6 holes for SC Simplex adapters) and a client with a capacity of 36J (36 holes for SC Simplex adapters),

-Inserts with the possibility of tilting and complete disassembly facilitate the work,

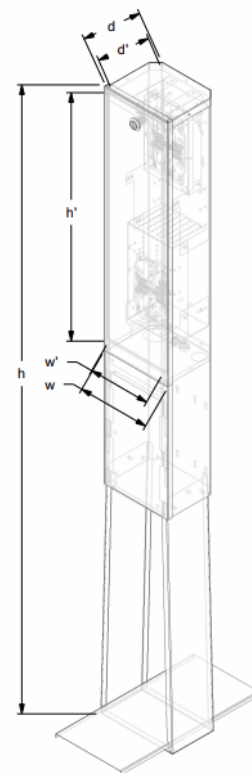
-Insert mounting bracket on the back wall also acts as cable / coil holder,

-Door closed with one hermetic cylinder lock (dedicated key code),

-Completely disassembled door with poured polyurethane gasket and sealing plate at the bottom of the post ensure the upper part of the cabinet IP65 tightness

-2 separate inputs blinded by airtight glands and 2 holes dedicated for the cable input, sealed with multigate grommet,

-The ground part of the cabinet after mounting the pedestal is 100cm.



Symbol	External dimensions (mm)			Internal dimensions (mm)		
	height (h)	width (w)	depth (d)	height (h')	width (w')	depth (d')
<b>RSZ-160/18/14 36J</b>	1593	185	148	626	160	140



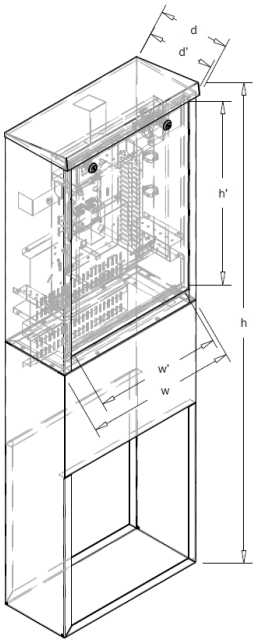
**RSZ-160-18-14 36J**

Outdoor Fiber Optic Distribution Frame - 72J

DESCRIPTION:

Outdoor cabinet designed for FTTh networks where a simple construction allows for any arrangement of optical fibers.

- Body made of sheet metal with Magnelis coating 1mm thick,
- The pedestal made of sheet metal with a Magnelis coating 2mm thick, designed for mounting by digging into the ground to a depth of 60cm,
- IP54 category and mechanical resistance IK10 ratings,
- Door closed with 2 airtight cylinder locks (dedicated key code),
- Equipped with a 72J switching field (36 holes for SC DX adapters),
- Additional 3J bay (3 holes for SC SX adapters) for the signal source,
- Separate cable spare in the upper part of the cabinet with mounted ø37mm 5mm long conduit,
- Removable panel allows convenient welding at a distance of up to 5m from the cabinet,
- Dedicated place for splitter in the upper part of the hinged panel,
- The ground part of the cabinet after mounting the pedestal is 80cm.



Symbol	External dimmensions (mm)			Internal dimmensions (mm)		
	height (h)	width (w)	depth (d)	height (h')	width (w')	depth (d')
RSZ-140/44/20 72J	1399	444	213	534	374	180



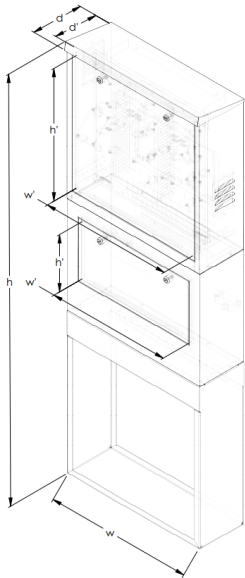
RSZ-140/44/20 - 72J

## Outdoor Fiber Optic Distribution Frame - 144J

DESCRIPTION:

Outdoor cabinet designed for FTTH networks where a simple construction allows for any arrangement of optical fibers.

- Body made of sheet metal with Magnelis coating, thickness 1.0mm,
- The pedestal made of sheet metal with a Magnelis coating, thickness 2.0mm, designed for mounting by digging into the ground to a depth of 60cm,
- The cabinet made in a modular structure,
- Equipped with a 144J switching field (72 holes for SC Duplex adapters),
- Separate space for a spare cable in the middle of the cabinet,
- Each door closed with 2 cylinder locks with a plug (dedicated key code),
- Hinged panel with the possibility of disassembly,
- Dedicated place for splitter in the back of the cabinet,
- The total height of the cabinet after mounting the pedestal is 110cm.



Symbol	External dimmensions (mm)			Internal dimmensions (mm)		
	height (h)	width (w)	depth (d)	height (h')	width (w')	depth (d')
<b>RSZ-170/60/20 144J</b>	1701	602	213	520	532	180



**RSZ-170/60/20 - 144J**



## Mast Cabinet 10"

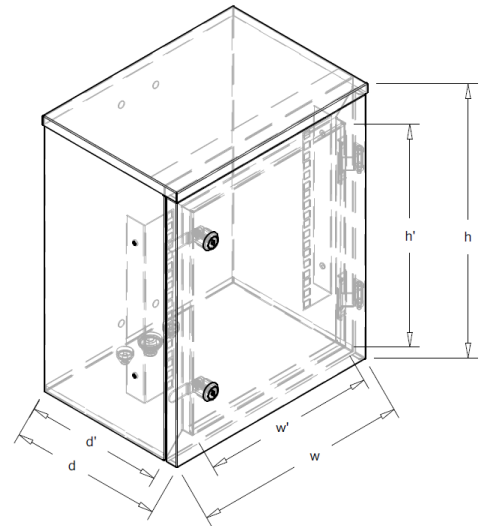
### DESCRIPTION:

Hermetic cabinet designed for mounting on masts and poles with a polyurethane gasket.

- Cabinet is a mechanical cover for telecommunication equipment,
- Closed with two hermetic locks,
- Made of sheet metal with Magnelis coating with a thickness of 1mm.
- IP65 category and mechanical resistance IK10 ratings (confirmed by test report No. B / 2016/233),
- Possibility of mounting with attached U-bolts on a  $\varnothing 50$  mm mast,
- Cable entry from below, the cabinet has 2 holes  $\varnothing 16$  mm and 1 hole  $\varnothing 24$  mm, sealed with hermetic glands,
- Rear wall stiffened in the places of mounting screws.

### Additional equipment:

- 10" 6U racks mounted vertically,
- 10" 1U shelf,
- PS 10" 1U SC 16xDX.
- A set of mast holders 330mm(2 pcs).



outdoor cabinets

Symbol	External dimmensions (mm)			Internal dimmensions (mm)		
	height (h)	width (w)	depth (d)	height (h')	width (w')	depth (d')
<b>SM-40/33/23</b>	416	332	235	332	262	209



**SM-40/33/23**

## Mast Cabinet 19"

### DESCRIPTION:

Hermetic cabinet designed for mounting on masts and poles with a polyurethane gasket.

-Made of sheet metal with Magnelis coating with a thickness of 1mm.

-Closed with two hermetic locks,

-Protection IP65 and mechanical resistance IK10 ratings (confirmed by test report No. B / 2016/233),

-Cabinet assembly (suggested due to its size) using 2 pole holders 558mm or wall mounting option,

-Rear wall stiffened in the places of mounting screws.

SM-42/55/32 19" 5U: - Standard equipped with 2 holes  $\varnothing 16$  mm and 1 hole  $\varnothing 24$  mm, sealed with airtight glands,

-U-bolts for mast  $\varnothing 50$  mm included,

-19" 5U rack mounts as additional equipment.

SM-50/55/41 19" 9U i SM-64/55/41 Rack 19" 12U: - Standard equipped with 6 holes  $\varnothing 24$  mm located in the bottom wall, sealed with airtight glands,

-U-bolts not included,

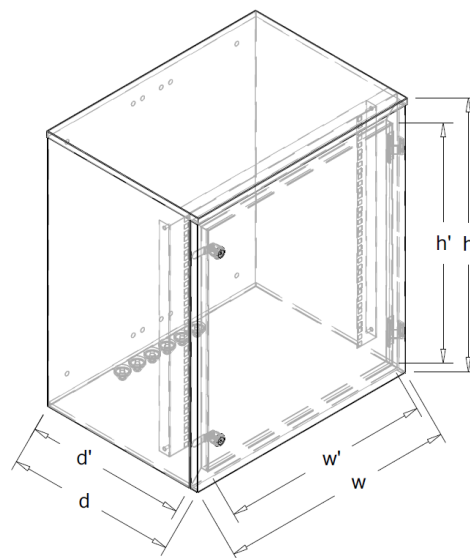
-19" rack mounts in standard equipment.

### Additional equipment:

-19" 1U shelf,

-19" fiber optic distribution box,

-A set of pole holders 558mm (2 pcs).



Symbol	External dimensions (mm)			Internal dimensions (mm)		
	height (h)	width (w)	depth (d)	height (h')	width (w')	depth (d')
<b>SM-42/55/32 19" 5U</b>	416	558	317	332	491	290
<b>SM-50/55/41 19" 9U</b>	501	558	403	421	491	379
<b>SM-64/55/41 19" 12U</b>	638	558	403	558	491	379



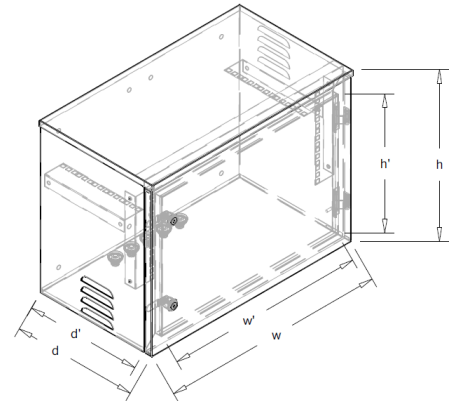
**SM-64/55/41 19" 12U**

## Mast Cabinet 19" with ventilation

### DESCRIPTION:

Hermetic cabinet designed for mounting on masts and poles with a polyurethane gasket. -Made of sheet metal with Magnelis coating with a thickness of 1,5mm.

- Closed with two or three hermetic locks,
- IP53 category and mechanical resistance IK10,
- Cabinet has additional body reinforcement at the mounting holes,
- Cable entry from below has 5 holes  $\varnothing 24$  mm sealed with hermetic glands,
- Cabinet assembly (suggested due to its size) using 2 pole holders or wall mounting option,
- Ventilation holes with the possibility of installing ventilation kit,
- 19" vertical rack mounts in standard equipment,
- Rear wall stiffened in the places of mounting screws.



### Additional equipment:

- 19" 1U shelf,
- 19" fiber optic distribution box,
- Heating kit,
- Ventilation kit,
- A set of pole holders (2 pcs).

Symbol	External dimmensions (mm)			Internal dimmensions (mm)		
	height (h)	width (w)	depth (d)	height (h')	width (w')	depth (d')
<b>SM-42/55/32 5U Wt</b>	416	560	313	332	490	289
<b>SM-42/55/60 5U Wt</b>	417	558	600	320	479	575
<b>SM-64/55/60 12U Wt</b>	639	559	600	542	480	567
<b>SM-80/55/45 12U Wt</b>	802	551	445	705	472	421



**SM-42/55/32 Wt**

## "MZ" Cabinet

### DESCRIPTION:

Cabinet made of sheet metal with a 1,0 mm thick Magnelis coating.

-Locked by 2 padlocks T-13 Barrel with 8 mm diameter pins (basic version and L version) or hermetic locks (Z and ZL version),

-Cabinet has from bottom 2 holes Ø16 and 1 hole Ø24 blinded with hermetic glands,

-Can be wall mounted or mounted with 2 pole holders.

Additional equipment for basic version:

-19" 5U rack mounts, fixed or pull-out,

-PS 19" 1U 24xSC SX / DX,

-Splice tray,

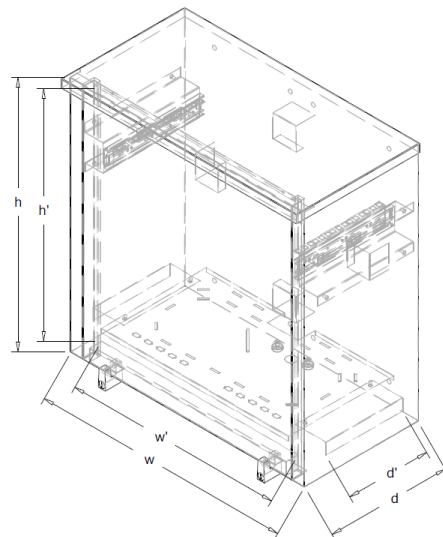
-Cable storage organizer,

-2 pole holders.

Cabinets in L and ZL versions are also equipped with:

-Welded cable organizer (cable reserve) on the back panel,

-Shelf with commutation field.



Symbol	External dimmensions (mm)			Internal dimmensions (mm)		
	height (h)	width (w)	depth (d)	height (h')	width (w')	depth (d')
<b>MZ-62/61/30</b>	627	613	322	560	514	266
<b>MZ-62/61/30 Z</b>	627	613	322	560	514	266
<b>MZ-62/61/30 L</b>	627	613	322	519	514	266
<b>MZ-62/61/30 ZL</b>	627	613	322	519	514	266



**MZ-62/61/30 ZL**

## ***INDOOR CABINETS DEDICATED FOR FTTh NETWORK***

Indoor MANTAR cabinets are a mechanical shield for telecommunications equipment, located among others in multi-apartment buildings.

They constitute a complete system of solutions dedicated to the construction of local copper or fiber optic FTTh networks.

As mechanical protection in MANTAR cabinets, we use a padlock system, cylinder locks with one or different key codes or high security safe locks with the approval of the Institute of Precision Mechanics.

Using the wide range of accessories, the cabinets can be easily adapted to individual needs. We offer the possibility of making cable holes and openings for fiber optic adapters according to customer preferences.

We design and manufacture custom-made cabinets on request. Small series can also be implemented.

Our solutions are certificated and patents protected.



## M-52/52/16 Cabinet - 144J

### DESCRIPTION:

Cabinet designed for wall mounting in places particularly vulnerable to devastation and burglary.

-It enables the termination of cables reaching the building from the telecommunications center, vertical cables and the assembly of optical splitters,

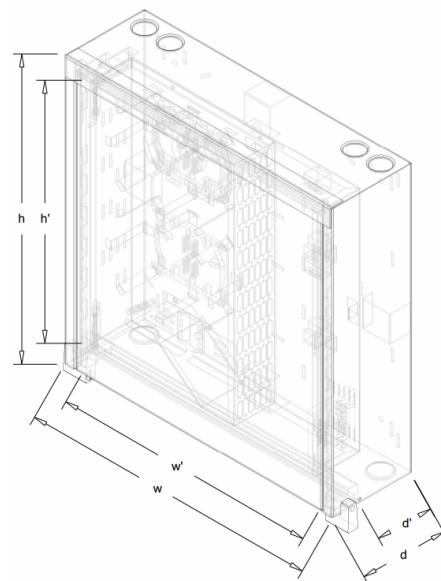
-In the cabinet there is a fiber optic frame with a 144 J patchpanel (72 holes, S.C., DX), two screws for mounting fiber optic trays and holders for the organization of fiber optic fibers, it is tilting and unmountable,

-Organizational handles for easy cable storage (at the back, under the distribution box),

The cabinet has 2 holes in the corners from above and one at the bottom (Ø38 / 29 - plugged),

-Closing with 2 padlocks T-13 Barrel with 8 mm diameter shank,

-M 52/52/16 WZM version has safe lock (with IMP certificate, high security according to PN-ENV 1300:2014-03)



Symbol	External dimmensions (mm)			Internal dimmensions (mm)		
	height (h)	width (w)	depth (d)	height (h')	width (w')	depth (d')
<b>M-52/52/16 ST 144J</b>	522	520	157	455	461	102
<b>M-52/52/16 WZM 144J</b>	522	520	157	455	461	102



**M 52/52/16 ST 144J**

## Fiber Optic Distribution Frame - 44J

### DESCRIPTION:

Two-access cabinet (operator part separated from the client switching panel), equipped with a double door system for sharing the network.

-Material: sheet steel 1mm thick,

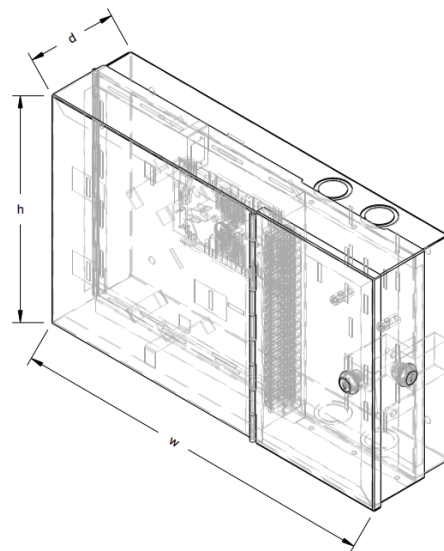
-Closing by 2 cylinder locks with one or two different key code,-2 blind holes to knock out Ø29 / 38 on the top and bottom of the cabinet,

-As standard 22 holes for SC Duplex fiber optic adapters, screw for attaching a fiber optic remote control, cable organizers,

-The possibility of mounting optical couplers (splitters) and trays for optical fiber splices,

-Possibility to insert linear cables from above and below.

On request it is possible to make other cable holes and other holes for fiber optic adapters.



Symbol	external dimensions (mm)		
	height	width	depth
<b>SRS-28/45/12 44J SC DX</b>	281	455	116



**SRS 28/45/12 44J DX**

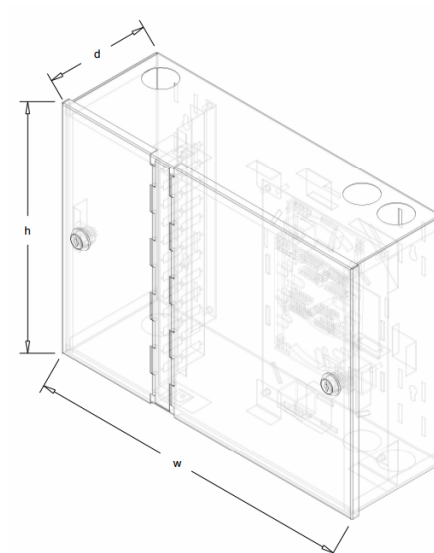
## Fiber Optic Distribution Frame - 48J

### DESCRIPTION:

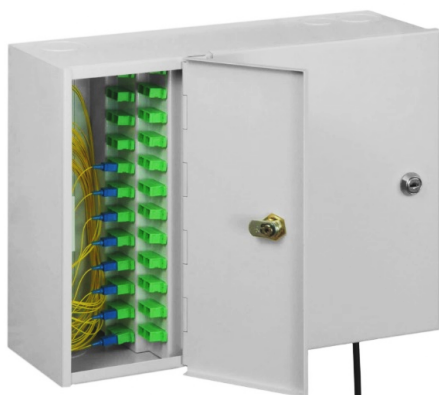
Two-access cabinet (operator part separated from the client switching panel), equipped with a double door system for sharing the network.

- Material: sheet steel 1mm thick,
- Closing by 2 cylinder locks with one or two different key code,
- As a standard, the commutation field has 24 holes for SC fiber optic adapters,
- Possibility to connect cables coming from the telecommunications center to the building, vertical and line cables,
- Possibility of mounting optical couplers (splitters) and trays for optical fiber splices,
- It has 3 blind holes to knock out Ø29/38 on the top and bottom of the cabinet,
- The cabinet has a cable organizer (cable stock) in the operator's part.

On request it is possible to make other cable holes and holes for fiber optic adapters.



Symbol	external dimensions (mm)		
	height	width	depth
<b>SRS-30/40/13 48J</b>	304	406	131



**SRS 30/40/13 48J DX**

## Fiber Optic Distribution Frame - 60J or 96J

### DESCRIPTION:

Two-access cabinet (operator part separated from the client switching panel), equipped with a double door system for sharing the network.

-Material: sheet steel 1mm thick,

-Closing by 2 cylinder locks with one or two different key code,

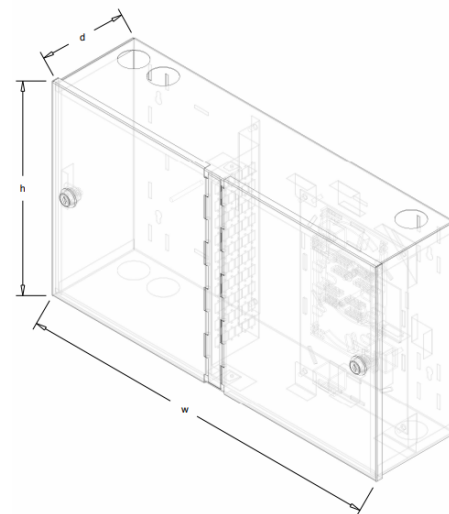
-Standard commutation field has 48 holes for fiber optic adapters type SC DX (96J) or in the second version 60 holes for SC SX fiber optic adapters (60J),

-Organizational handles for easy stacking of cable stocks,

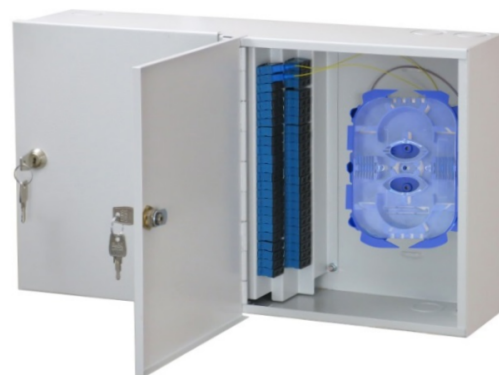
-Extended client part with the possibility of making welds on mounted trays,

-It has 3 blind holes to knock out Ø29 / 38 on the top and bottom of the cabinet.

On request it is possible to make other cable holes and holes for fiber optic adapters.



Symbol	external dimensions (mm)		
	height	width	depth
<b>SRS-30/53/13 60J</b>	304	529	131
<b>SRS-30/53/13 96J</b>	304	529	131



**SRS 30/53/13 96J**

## Wall mounted Fiber Optic Distribution Frame

### DESCRIPTION:

Switchboard dedicated for mounting at the subscriber as an access point.

-Designed for wall mounting as a finishing element of a fiber-optic network,

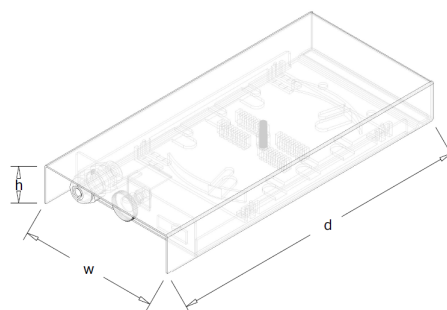
-Closed with a knurled screw,

-Dedicated space for the welding tray up to 12 splices,

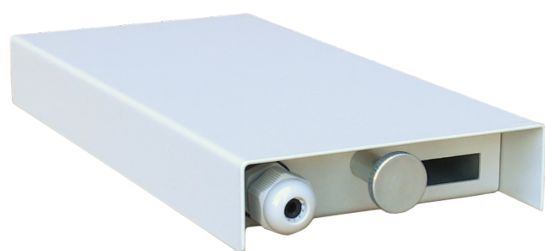
-Possibility to use one SC DX adapter,

-The set has a PG-9 or PG-7 cable gland for 4-8mm cable,

-Material: body sheet metal 1.50mm thick / cover 1.00mm thick.



Symbol	external dimmensions (mm)		
	height	width	depth
<b>PSN-A</b>	32	111	241



**PSN - A**



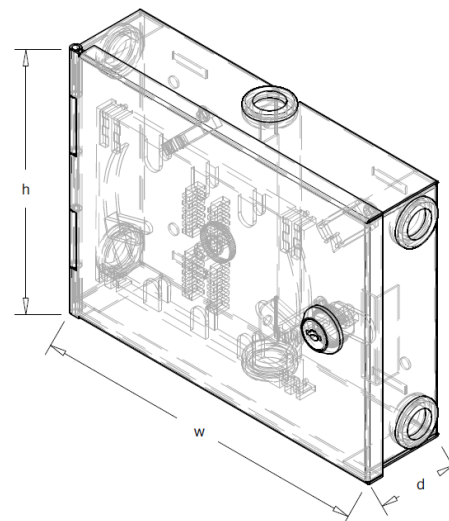


## Wall mounted Fiber Optic Distribution Frame dedicated for easy access cables

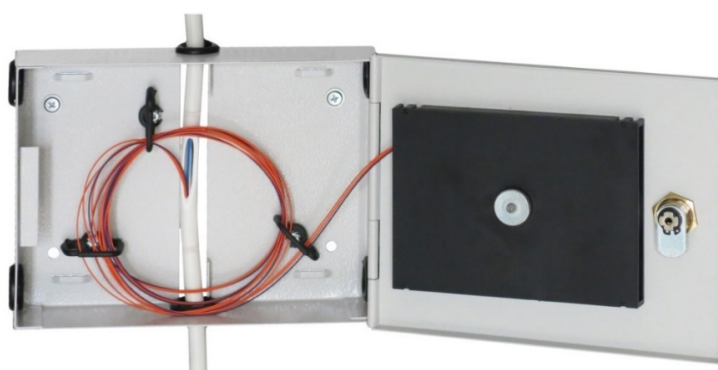
### DESCRIPTION:

Wall mounted cabinet designed for FTTx networks construction.

- Designed for making branches from an easy-access cable in multi apartment buildings,
- Lockable with 4-ratchet lock (dedicated key code),
- Cabinet has 2 Ø19 entries in the side walls and one on the top and bottom, dedicated to the entry of an easy access cable plugged with openings,
- A dedicated place for cable storage,
- Vertical hole on the back wall, for easy wall-mounting of the cabinet on the cable,
- The standard equipment includes handles ordering the fiber supply,
- Material: steel sheet 1 mm thick.



Symbol	external dimensions (mm)		
	height	width	depth
<b>PSN-15/20/5</b>	151	198	49



**PSN - 15/20/5**

## Wall mounted Fiber Optic Distribution Frame dedicated for easy access cables

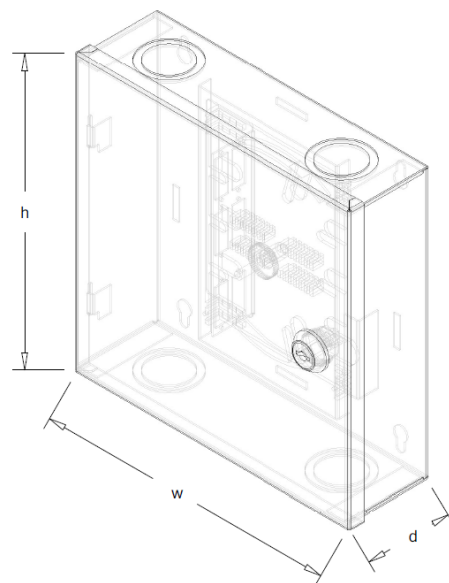
### DESCRIPTION:

Wall mounted cabinet designed to build FTTx networks.

- Possibility of cooperation with the vertical infrastructure of the building,
- Equipped with a shield for fiber optic splices with a commutation field for 6 SC DX adapters,
- In the rear part there are ribs enabling the assembly of clamps ordering fiber optic fibers,
- Lockable with 4-ratchet lock (dedicated key code),
- The possibility of introducing cable from the top and the bottom, the cabinet has 2 entries (Ø38 / 29 - plugged) on the bottom wall, and 2 entries from above,
- Material: steel sheet 1mm thick,

On request:

- Possibility to change the type and arrangement of cable entries,
- Possibility of making an insert for a different type and number of adapters.



Symbol	external dimensions (mm)		
	height	width	depth
<b>PSN 3 20/20/6</b>	205	204	61
<b>PSN 4 29/29/10</b>	295	294	102

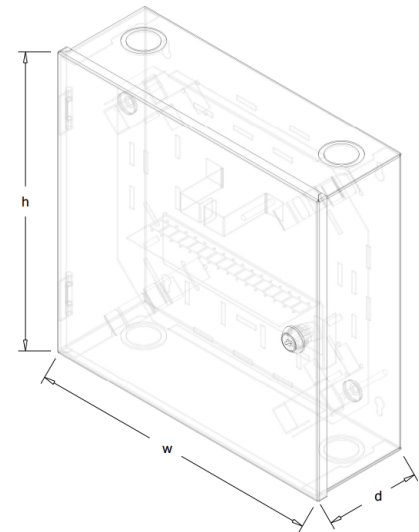


**PSN - 3**

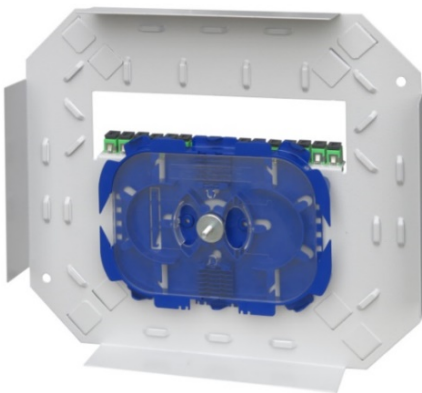
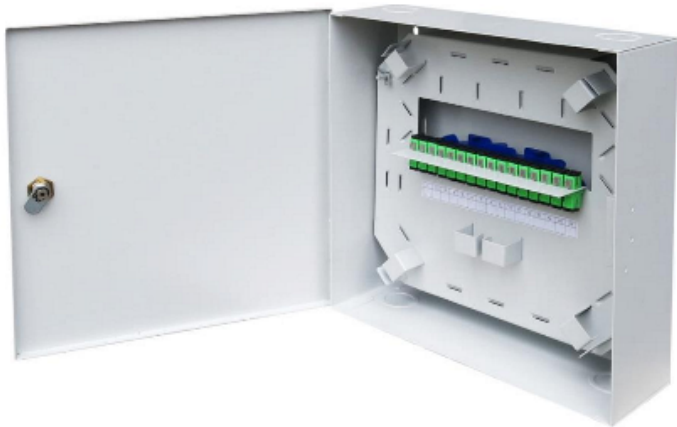
# Wall mounted Fiber Optic Distribution Frame 32J and 36J

DESCRIPTION:

- Wall-mounted cabinet designed to build FTTx networks.
- Equipped with a fiber optic splice tray with a commutation field for 16 SC SX adapters or 18 SC DX adapters,
- The cabinet has 2 cable entries (Ø38 / 29 - plugged) on the bottom, and 2 holes on the top,
- Dedicated space for splitter,
- In the rear part there are ribs enabling the assembly of clamps ordering fiber optic fibers,
- Closing by cylinder lock (dedicated key code),
- Space for cable storage,
- Material: steel sheet 1 mm thick.



Symbol	external dimmensions (mm)		
	height	width	depth
PSN-30/30/10 16xSX	305	305	100
PSN-30/30/10 18xDX	305	305	100



PSN - 30/30/10 16xSX

indoor cabinets

## Cabinet for Easy Access Cable spare

### DESCRIPTION:

Wall-mounted cabinet designed to build FTTx networks.

-Possibility of collecting fiber stock from the easy access cable, and cooperation with the vertical infrastructure of the building,

-Lockable with 4-ratchet lock (dedicated key code),

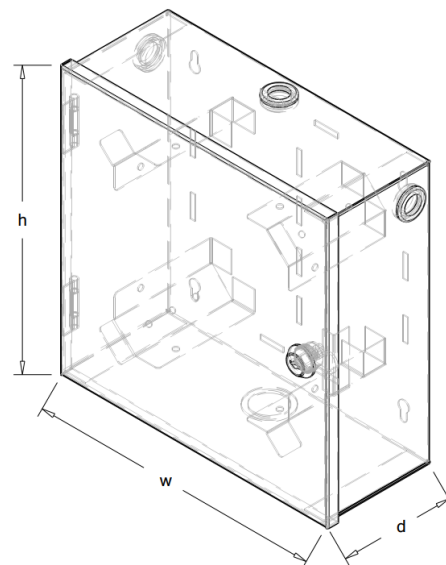
-Possibility to insert linear cables on four sides, the cabinet has cable entries with a diaphragm (Ø19) on the bottom wall, 2 on the sides of the cabinet, and a blind hole (Ø38 / 29) at the top of the cabinet,

-In the rear part there are ribs enabling the assembly of clamps ordering fiber optic fibers,

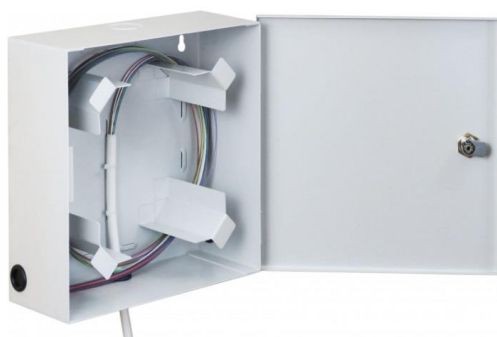
-Material: steel sheet 1 mm thick,

-Possibility to order with a commutation field for 12 fiber optic adapters type SC Dx, and 2 trays for optical fiber splices,

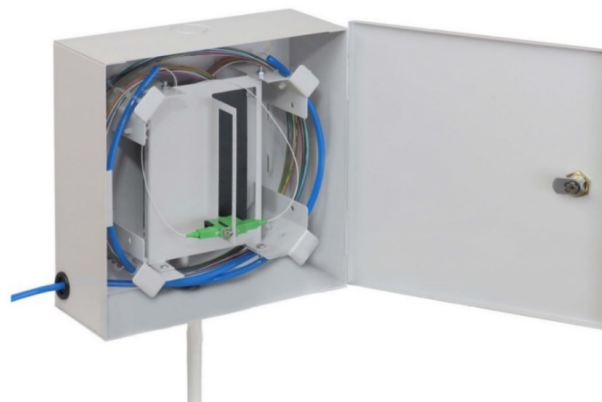
-On request we can made other cable entries.



Symbol	external dimmensions (mm)		
	height	width	depth
<b>PSN-25/25/10 Z</b>	255	255	101
<b>PSN-25/25/10 PK</b>	255	255	101



**PSN - 25/25/10 Z**

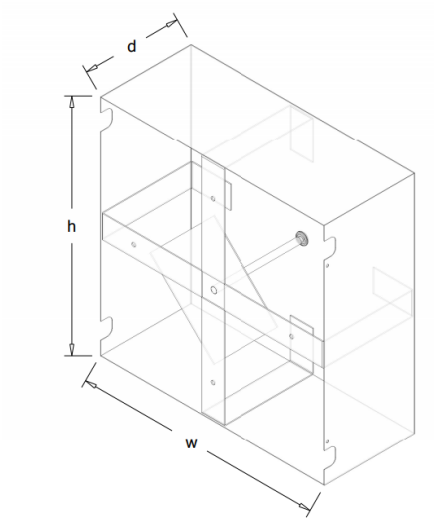


**PSN - 25/25/10 Z PK**

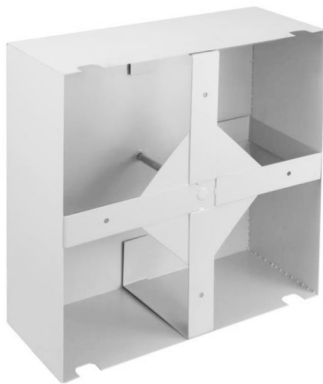
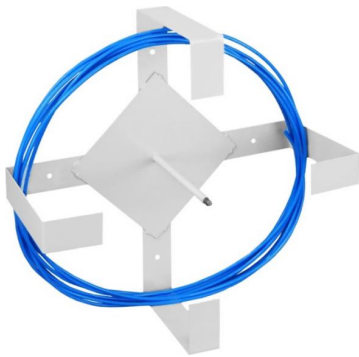
# Cabinet for cable spare

DESCRIPTION:

- Metal frame, fixed directly to the wall.
- Ensure the position of the cable supply while maintaining a safe bend radius,
- Possibility to roll up a 50m fiber optic cable with a diameter of 15.5mm,
- The housing is mounted to the frame by means of a screw from the front of the cabinet,
- Frame made of sheet metal 2mm, casing made of sheet metal 1mm,
- On request, it is possible to make cabinets in other dimensions.



Symbol	external dimmensions (mm)		
	height	width	depth
ZK-50/50/20	496	496	200



indoor cabinets

Szafka na Zapas Kabla 50/50/20



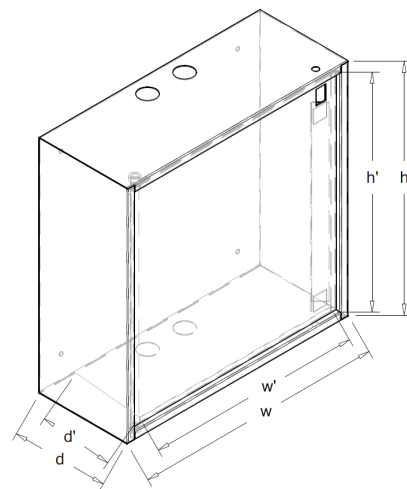
## "GM" Cabinet

### DESCRIPTION:

- Designed for wall mounting in places particularly exposed to devastation and burglary,
- Possibility of cable entry from the top and bottom, the cabinet has 2 holes (Ø38 / 29- plugged) from above and below,
- Closing by padlock with a stem in standard equipment.
- Made of steel sheet: body 1.5mm, door 2mm thick.

### Additional equipment:

- Possibility order with other dimensions, any number and arrangement blind holes (ø29, ø38, ø48), or rectangular holes,
- Possibility of installing 19" 3U racks in GM-50/50/20.



Symbol	External dimmensions (mm)			Internal dimmensions (mm)		
	height (h)	width (w)	depth (d)	height (h')	width (w')	depth (d')
<b>GM-40/40/18</b>	401	400	181	347	333	147
<b>GM-50/50/20</b>	501	500	201	447	432	175



**GM-50/20/20**

## Armored Cabinet

### DESCRIPTION:

Designed for wall mounting in places particularly exposed to devastation and burglary,

-Material: steel sheet thickness 2 mm.,

-Closing in SP-19" 6U by one safe lock or in SP-19" 9U and SP-19" 15U: 2 safe locks (with IMP certificate, high security according to PN-ENV 1300:2014-03),

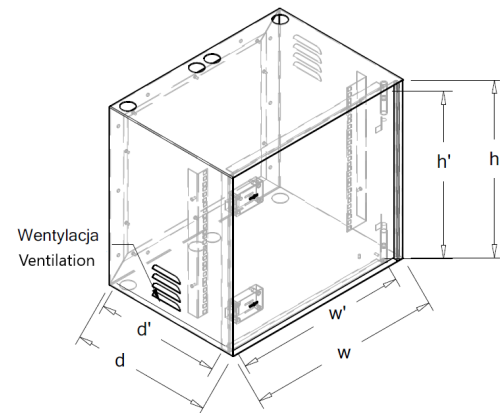
-Side wall embossing for gravity ventilation,

-Cabinet allows installation of devices in 19" rack mounts,

-Possibility of cable entries from above and below, e.g. SP-19" 9U has 4 cables entries (Ø38 - plugged),

-Usable distance from door to 110mm rack holders,

-Possibility order with other dimensions, any number and arrangement blind holes (Ø29, Ø38, Ø48), or rectangular holes.



### Additional equipment:

-3U voltage distribution panel,

-PS 19" 1U SC SX/DX,

-19" 1U shelf depth 260mm or 19" 1U shelf depth 340mm

-PSN 1

Symbol	External dimensions (mm)			Internal dimensions (mm)		
	height (h)	width (w)	depth (d)	height (h')	width (w')	depth (d')
<b>SP 19" 6U gł.600</b>	350	550	600	316	485	585
<b>SP 19" 9U gł.400</b>	500	550	400	466	485	385
<b>SP 19" 9U gł.600</b>	500	550	600	466	485	585
<b>SP 19" 15U gł.400</b>	720	550	400	686	485	385
<b>SP 19" 15U gł.650</b>	720	550	650	686	485	635



**SP-19" 9U**

## "M" Reinforced Cabinet (closing with safe lock)

### DESCRIPTION:

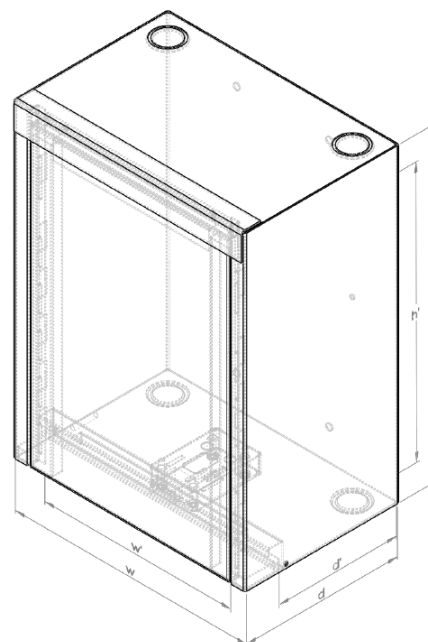
Cabinet designed for wall mounting in places particularly vulnerable to devastation and burglary.

- Material: steel sheet thickness 1.5 mm.,
- Special door construction reinforced with steel sheet angles. 2mm.,
- Closing by safe lock (with IMP certificate, high security according to PN-ENV 1300:2014-03).
- Booking a separate key code for each client, on differently different codes,
- Cabinet has 2 holes from above and from below (Ø38 / 29 - plugged),

Z version of the cabinet has the cable stock organizer on the back panel and the L version has cable organizer and PS 1 board.

### Additional equipment:

- 19" rack mounts fixed or retractable
- Mounting plate made of magnelis / OSB sheet,
- PS 9" 1U SC Simplex / Duplex,
- Metal cable organizer (cable supply) on the back panel, or cable handle M1,
- PSN 1.



Symbol	External dimensions (mm)			Internal dimensions (mm)		
	height (h)	width (w)	depth (d)	height (h')	width (w')	depth (d')
<b>M-40/30/20 WZM</b>	402	300	202	355	241	148
<b>M-50/50/20 WZM</b>	502	500	202	435	441	148
<b>M-58/58/30 WZM</b>	582	580	302	515	521	248
<b>M-70/58/30 WZM</b>	702	580	302	635	521	248
<b>M-70/58/30 WZM L</b>	702	580	302	591	521	248
<b>M-70/58/30 WZM Z</b>	702	580	302	635	521	248



**M 40/30/20 WZM**



## "M" Reinforced Cabinet (closing with padlocks)

### DESCRIPTION:

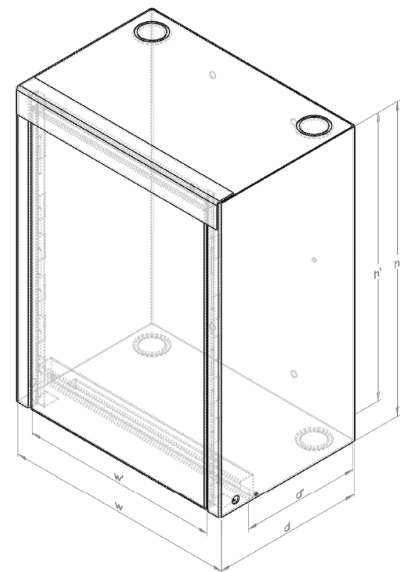
Cabinet designed for wall mounting in places particularly vulnerable to devastation and burglary.

- Material: steel sheet thickness 1.5 mm.,
- The body is reinforced with steel sheet angles. 2mm.,
- Closing by 2 padlocks T-13 Barrel with a diameter of 8mm.,
- Possibility of cable entry from the top and bottom, the cabinet has 2 holes from above and from below ( $\varnothing 38$  / 29 - blinded).

### Additional equipment:

- 19" rack mounts fixed or retractable,
- Mounting plate made of Magnelis sheet / OSB sheet,
- PS 9" 1U SC Simplex / Duplex,
- Metal cable organizer (cable supply) on the back panel, or cable handle M1,
- Splice tray.

Possibility order with other dimensions, any number and arrangement blind holes ( $\varnothing 29$ ,  $\varnothing 38$ ,  $\varnothing 48$ ), or rectangular holes.



Symbol	External dimmensions (mm)			Internal dimmensions (mm)		
	height (h)	width (w)	depth (d)	height (h')	width (w')	depth (d')
<b>M-40/30/20 ST</b>	402	300	202	355	241	148
<b>M-40/40/14 ST</b>	402	400	142	335	341	88
<b>M-50/50/20 ST</b>	502	500	202	435	441	148
<b>M-50/50/30 ST</b>	502	500	302	435	441	248
<b>M-58/58/30 ST</b>	582	580	302	515	521	248



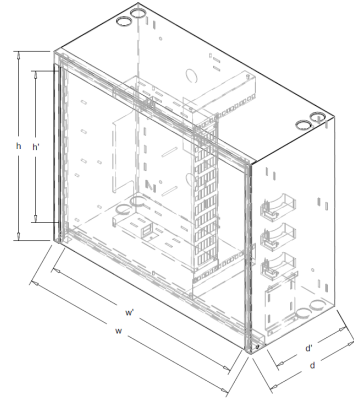
**M 40/30/20 ST**

## "M" Reinforced Cabinet - 128j (closing with padlocks)

### DESCRIPTION:

Cabinet designed for wall mounting in places particularly vulnerable to devastation and burglary.

- Material: steel sheet thickness 1.5 mm,
- Closing by 2 padlocks T-13 Barrel with a diameter of 8mm,
- Equipped with a fiber optic switch 19" 3U mounted on rack mountings with a Direct access to fibre optic cassettes,
- Fiber optic distribution frame with a commutation field for 64 SC Duplex and 6 SC Simplex connectors,
- A separate place for mounting an optical splitter.



Symbol	External dimensions (mm)			Internal dimensions (mm)		
	height (h)	width (w)	depth (d)	height (h')	width (w')	depth (d')
<b>M-58/70/30 ST</b>	582	700	302	514	628	249



**M 58/70/30 ST**

# "TPR" Cabinet closing by padlock

## DESCRIPTION:

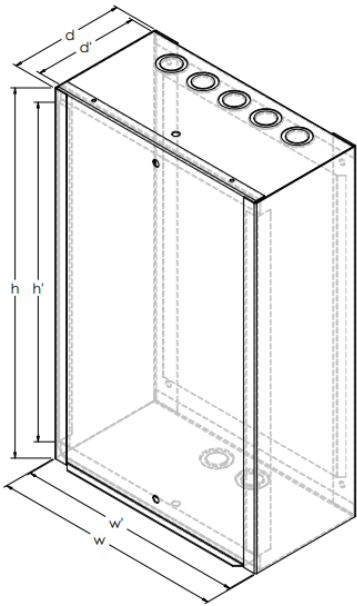
### TPR-30/30/12S:

- Material: sheet steel 1mm thick,
- Closing by 1 or 2 padlocks (top and bottom),
- Welded sheet metal with dimensions: 185mm high, 280mm wide,
- 2 entry cables (Ø38- blinded), one from the top and one from the bottom,

### TPR-54/34/17S:

- Material: sheet steel 1,5mm thick,
- Closing by 1 or 2 padlocks (top and bottom),
- Welded sheet metal with dimensions: height 430mm, width 320mm,
- 5 holes from above and 2 holes from below for cable entry (Ø38-plugged).

Possibility order with other dimensions, any number and arrangement blind holes (Ø29, Ø38, Ø48), or rectangular holes.



Symbol	External dimmensions (mm)			Internal dimmensions (mm)		
	height (h)	width (w)	depth (d)	height (h')	width (w')	depth (d')
<b>TPR-30/30/12 S</b>	321	302	130	299	300	109
<b>TPR-54/34/17 S</b>	541	339	179	537	336	157



TPR-30/30/12 S





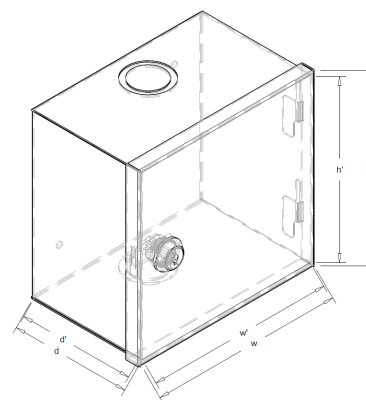
## "TPR" Cabinet with 1-point locking

### DESCRIPTION:

-Closing by 4-ratchet cylinder lock  
 -Material: steel sheet thickness 1mm,  
 -Possibility to completely disassemble the door.  
 -TPR- 15/15/10 has one Ø38 / 28 hole each, blinded from above and below for cable entry, full back,

-TPR-15/23/10 sides with Ø38 / 28 end caps or a rectangular hole through the entire length of the cabinet with a width of 20mm (L version), full back.

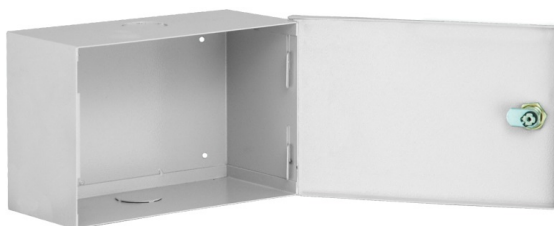
Possibility order with other dimensions, any number and arrangement blind holes (Ø29, Ø38, Ø48), or rectangular holes.



Symbol	External dimensions (mm)			Internal dimensions (mm)		
	height (h)	width (w)	depth (d)	height (h')	width (w')	depth (d')
<b>TPR-15/15/10</b>	154	160	101	148	153	99
<b>TPR-15/23/10 L</b>	154	237	101	148	229	99
<b>TPR-15/23/10 P</b>	154	237	101	148	229	99



**TPR-15/15/10**



**TPR-15/23/10 P**



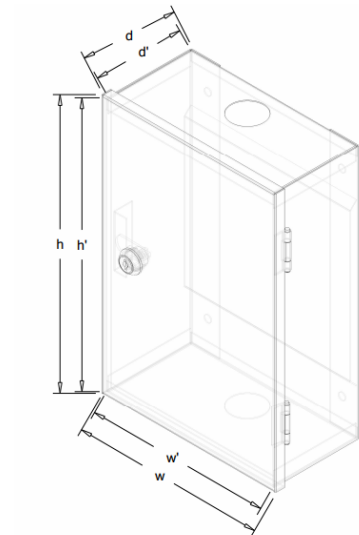
**TPR-15/23/10 L**

## "TPR" Cabinet with 1-point locking

### DESCRIPTION:

- Closing by 4-ratchet cylinder lock,
- Rectangular opening through the entire length of the cabinet with a width of 20mm (L version),
- Material: steel sheet thickness 1mm.

Possibility order with other dimensions, any number and arrangement blind holes (ø29, ø38, ø48), or rectangular holes.



Symbol	External dimensions (mm)			Internal dimensions (mm)		
	height (h)	width (w)	depth (d)	height (h')	width (w')	depth (d')
<b>TPR-30/20/10 L</b>	305	205	102	298	196	83
<b>TPR-30/20/10 P</b>	305	205	102	298	196	83
<b>TPR-30/30/12 L</b>	303	303	120	274	293	109
<b>TPR-30/30/12 P</b>	306	307	123	298	298	112



**TPR-30/20/10 L**

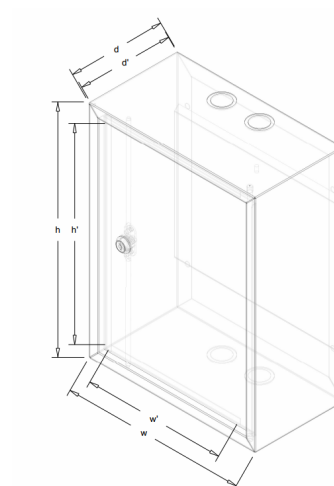
## "TPR" Cabinet with 2-points locking

### DESCRIPTION:

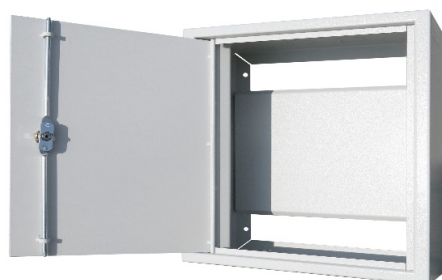
- Closing by 4-ratchet cylinder lock with 2-point locking.
- With 2 holes (Ø38 / 29-plugged) from above and below for cable entry.
- Material: steel sheet thickness 1mm.

On request we can:

- made it in other dimensions,
- do any number and arrangement of blinded holes (Ø29, Ø38, Ø48) or rectangular holes.



Symbol	External dimmensions (mm)			Internal dimmensions (mm)		
	height (h)	width (w)	depth (d)	height (h')	width (w')	depth (d')
<b>TPR-35/55/40 G</b>	350	550	400	297	497	374
<b>TPR-40/30/16 G</b>	400	300	160	347	247	135
<b>TPR-40/40/14 G</b>	400	400	140	347	348	116
<b>TPR-50/50/14 G</b>	500	500	140	447	447	109
<b>TPR-60/55/40 G</b>	600	550	400	547	497	374



**TPR-40/30/16**



**TPR-35/55/40 19" 6U**

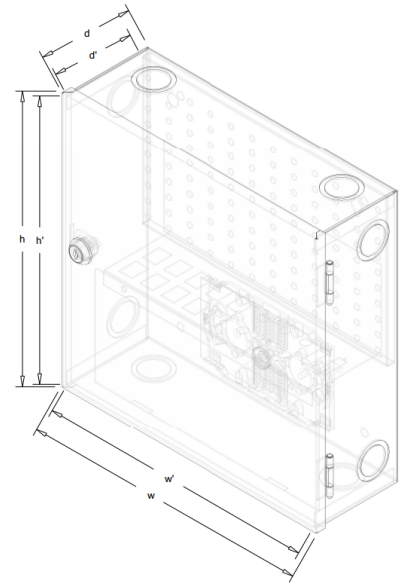
## Residential "TPR" Cabinet

### DESCRIPTION:

Flat distribution enclosure designed for flush / surface mounting in each apartment of a multi-family building in accordance with the applicable regulations under the regulation of the Polish Minister of Transport, Construction and Maritime Economy of November 6, 2012.

The internal panel comes standard with:

- 10 holes for Keystone connectors,
- 6 holes for F connectors,
- 2 holes for SC Duplex fiber optic adapters.
- Dedicated space for the weld tray and cabling reserve (perforated sheet allows organization)
- Has 2 holes Ø29 / 38 to break out on the top, bottom and side walls of the cabinet
- Closing: 4-ratchet cylinder lock.
- Material: 1 mm sheet.



Symbol	External dimensions (mm)			Internal dimensions (mm)		
	height (h)	width (w)	depth (d)	height (h')	width (w')	depth (d')
<b>TPR-30/30/10 Nt</b>	305	305	101	298	295	88
<b>TPR-30/30/10 Pt</b>	320	320	105	294	294	94



**TPR-30/30/10 Pt**



**TPR-30/30/10 Nt**



### ***Rack Fiber-optic Distribution boxes***

MANTAR fiber optic distribution boxes are created in cooperation and with the needs of persons performing all installation works in mind. The distribution boxes are intended for RACK cabinets with 10" and 19" width.

Using new technologies and innovative design solutions, distribution boxes offer convenience of work and are tailored to customer needs.

Our offer includes switches in heights from 1U up to 4U, which can hold as much as 192J.

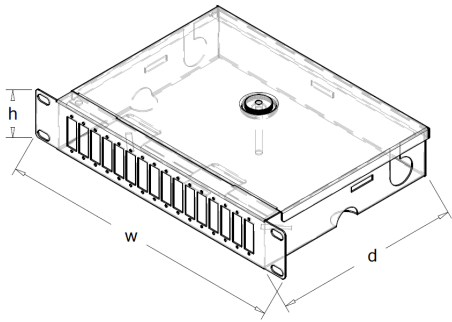
Our innovative solutions are protected by utility models and patents.



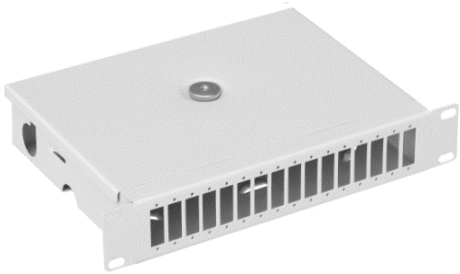
## Fixed Fiber Optic Distribution Frame

DESCRIPTION:

- Designed for mounting in 19" and 10" cabinets,
- Made of 1mm thick steel sheet,
- The 10" switch has a commutation field for 16 SC DX adapters,
- It has ribs that allow the installation of clamps ordering fiber optic fibers,
- The distribution board has the possibility to insert cables from the rear, has 4 holes (2 open and 2 closed) for PG 13.5 included in the set,
- Possibility to mount fiber-optic splice trays.
- 19" switch boards are available in two versions: SC SX and SC DX (for 12 or 24 holes SC adapters)



Symbol	external dimmensions (mm)		
	height	width	depth
<b>PS 10" 1U 16xDX st</b>	1U	10"	166
<b>PS 19" 1U 12xSX st</b>	1U	19"	212
<b>PS 19" 1U 12xDX st</b>	1U	19"	212
<b>PS 19" 1U 24xSX st</b>	1U	19"	212
<b>PS 19" 1U 24xDX st</b>	1U	19"	212
<b>PS 19" 2U 48xDX st</b>	2U	19"	212



**PS 10" 1U 16xDX st**



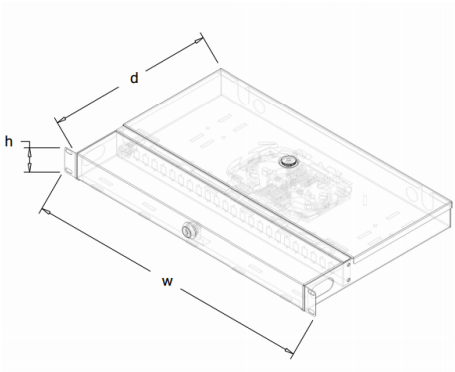
**PS 19" 1U 24xDX st**

distribution board

# **Locked Fiber Optic Distribution Frame**

DESCRIPTION:

- Designed for mounting in 19" cabinets,
- 4-ratchet lock - individual investor key,
- 19" switchgear made in two versions: SC Sx and SC DX (option for 12 J or 24 J),
- It has ribs that allow the installation of clamps ordering fiber optic fibers,
- Possibility to mount fiber-optic splice trays,
- The switchgear has the possibility to insert cables from the rear, the switchboard has 4 holes (2 open and 2 closed) for PG 13.5 chokes, included in the set,
- Made of 1 mm thick steel sheet.



Symbol	external dimmensions (mm)		
	height	width	depth
<b>PS 19" 1U 24xSX nz*</b>	43	482	289



distribution board

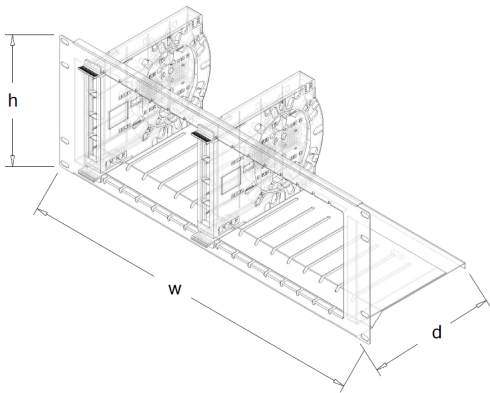
**PS 19" 1U 24xSX nz**

# 1U, 2U, 4U Modular Fiber Optic Distribution Frame

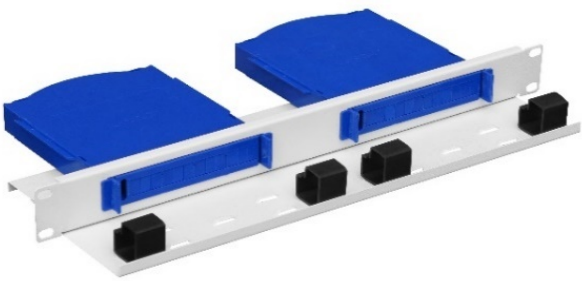
DESCRIPTION:

19" modular switchboard with 1,2,4U height for mounting in cabinets and teletechnical stands.

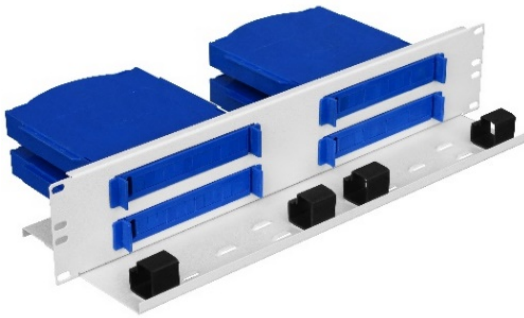
- The complete switchboard contains between 2 and 16 cartridges (modules) with a capacity of 12xSC Simplex, in total 24-192J. Modules 12J SX available as an accessory could be replacement for the splice tray,
- Made of 1 mm thick steel sheet,
- Possible to equip the switchboard with an additional shelf which helps organize cables.



Symbol	external dimmensions (mm)		
	height	width	depth
PS 19" 1U modul 24J	1U	19"	81
PS 19" 2U modul 48J	2U	19"	81
PS 19" 4U modul 192J	4U	19"	170



PS 19" 1U modul 24J



PS 19" 2U modul 48J



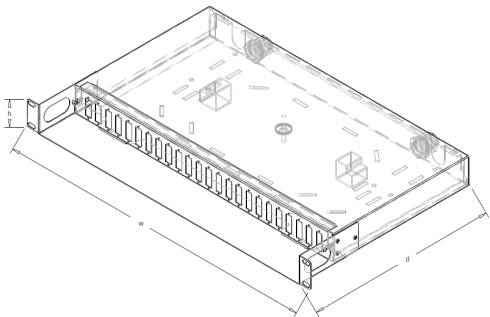
PS 19" 4U modul 192J

distribution board

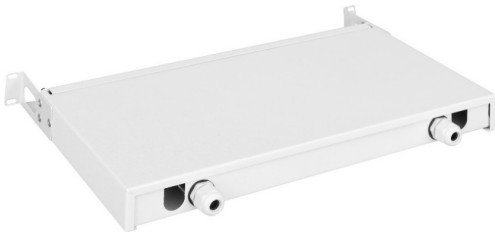
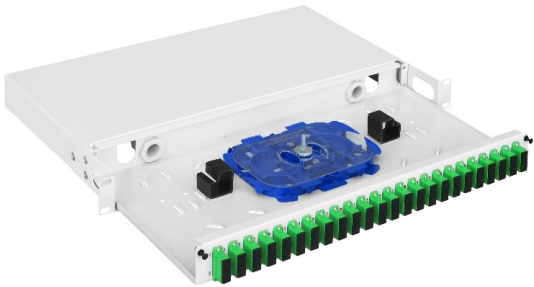
Fiber Optic Distribution Frame (without guides) 48J

DESCRIPTION:

- Designed for mounting in 19" cabinets.
- Possibility to mount fiber-optic splice trays,
  - Possibility of introducing linear cables from the rear, the distributor has 4 holes (2 open and 2 closed) for PG 13.5 chokes, included in the kit,
  - Made of 1 mm thick steel sheet,
  - Equipped with a removable drawer for convenient access to the interior,
  - It has self-adhesive handles and ribs enabling the assembly of cable ties for easy organization of cables.



Symbol	external dimmensions (mm)		
	height	width	depth
PS 19" 1U 24xDX W bp	1U	19"	290



PS 19" 1U 24xDX W bp



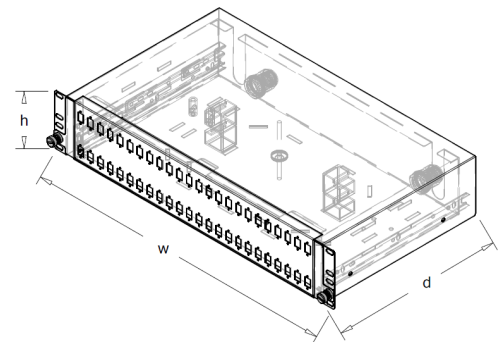
distribution board

## Fiber Optic Distribution Frame (with guides)

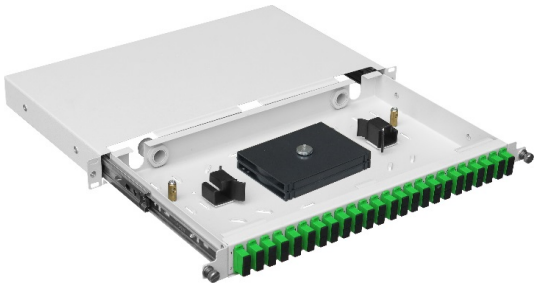
DESCRIPTION:

Designed for mounting in 19" cabinets.

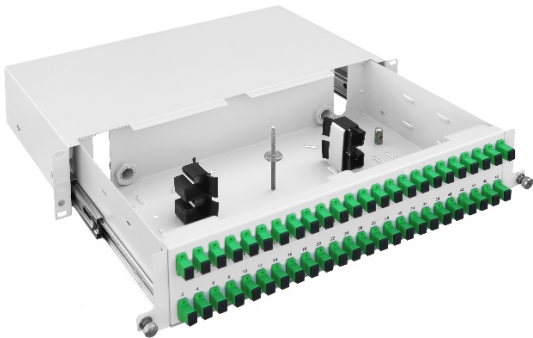
- Equipped with a removable drawer for convenient access to the interior,
- It has self-adhesive handles and ribs enabling the assembly of cable ties for easy organization of cables,
- Possibility to mount fiber-optic splice trays,
- Possibility of introducing linear cables from the rear, the distributor has 4 holes (2 open and 2 closed) for PG 13.5 chokes, included in the kit,
- Made of 1mm thick steel sheet.



Symbol	external dimmensions (mm)		
	height	width	depth
PS 19" 1U 24xSX W np	1U	19"	264
PS 19" 1U 24xDX W np	1U	19"	264
PS 19" 2U 48xSX W np	2U	19"	264
PS 19" 2U 48xDX W np	2U	19"	264
PS 19" 4U 144xSX W np	4U	19"	266



PS 19" 1U 24xDX W np



PS 19" 2U 48xSX W np

distribution board

## **ACCESSORIES**

A wide range of MANTAR accessories was created in cooperation with the needs of people carrying out all installation works in mind. They comprehensively complement the offer of external and internal cabinets dedicated to the construction and modernization of IT networks. Using new technologies and innovative design solutions, we offer convenience of work and high quality at competitive prices.

The MANTAR accessories range includes a wide selection of mounting brackets for external mast cabinets, cable holders, shelves and rack holders, voltage distribution panels, easy access cables, pigtails, ordering panels, fiber optic adapters, splice trays.



## ***Pole Holder Set***

### DESCRIPTION:

A set of fixing brackets for external mast claddings.

-Made of 2mm thick stainless steel,

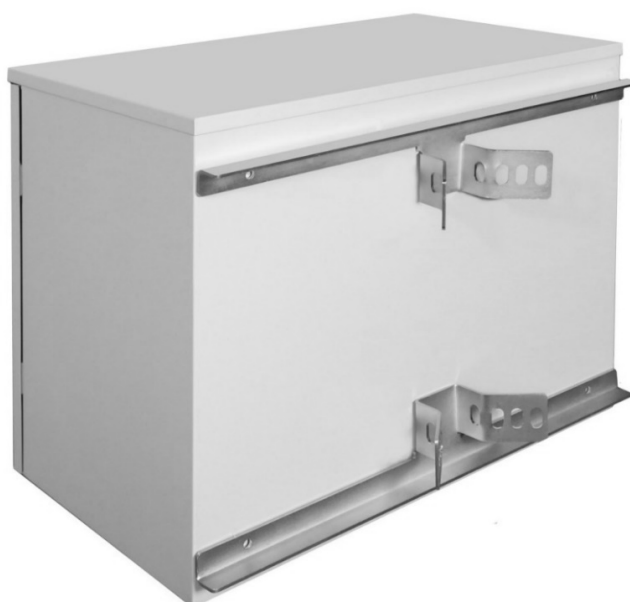
-Designed for mounting external cabinets on poles with a diameter of 90-200mm.

Additional equipment in stainless steel belt and buckles is not included in the offered holders.

Symbol	external dimensions (mm)		
	height	width	depth
<b>Uchwyt do słupa 330mm</b>	0	330	0
<b>Uchwyt do słupa 558mm</b>	0	558	0



**Uchwyt do słupa**



**Przykład mocowania uchytu do szafy SM 42/55/32**

## Ordering Panel 1U

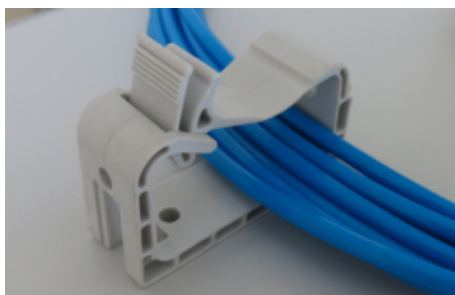
### DESCRIPTION:

- Suitable for mounting in 19" cabinets,
- Provides easy and safe routing of patchcords,
- Made by steel sheet thickness 1 mm.

Symbol	external dimmensions (mm)		
	height	width	depth
Panel porządkujący 19"1U	1U	19"	1



Panel Porządkujący 1U



Uchwyty kablowe M1

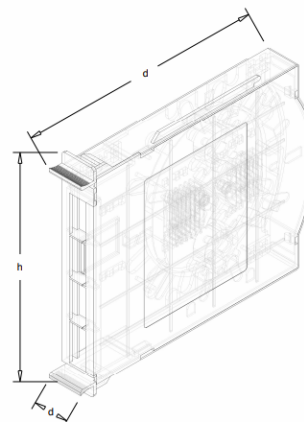


Uchwyty kablowe

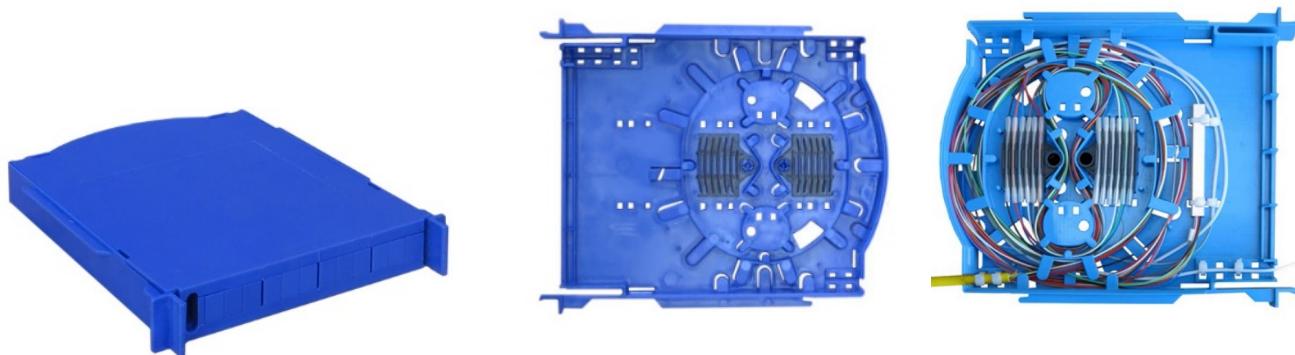
## 12J SX Modul

### DESCRIPTION:

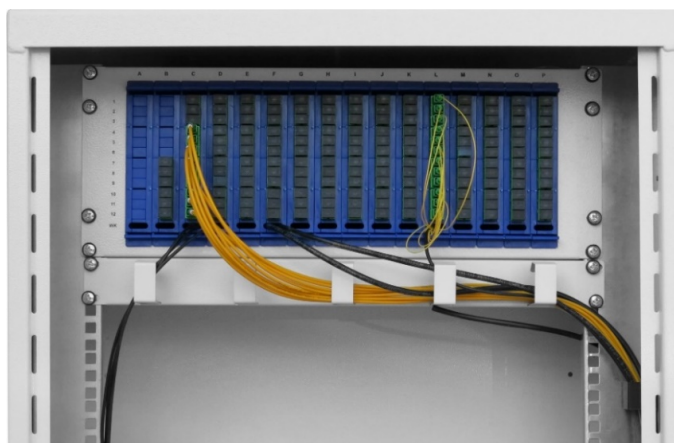
- Designed for placing and securing casings for optical fiber splices - 24 pieces
- Switching field for 12 SC SX adapters,
- Module equipped with holes for mounting tubes and splitter on cable ties,
- Protection of free places for adapters is provided by blanking plates,
- Fastening in the switchboard with latches,
- Universal splices tray made of plastic (ABS),
- Replacement for the splice tray.



Symbol	external dimensions (mm)		
	height	width	depth
<b>Kasetka (moduł) 12 x SC</b>	155	183	25



**Moduł 12J**



**PS 19" 4U z modułami w szafie M-58/58/30**

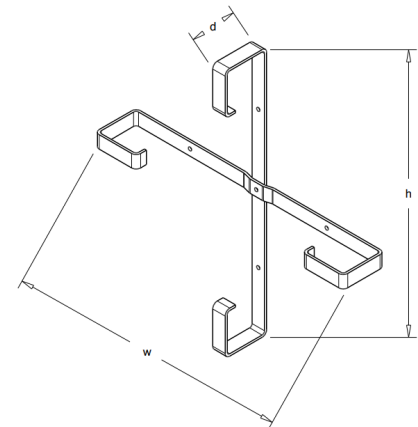
## Rack of spare cable socket

### DESCRIPTION:

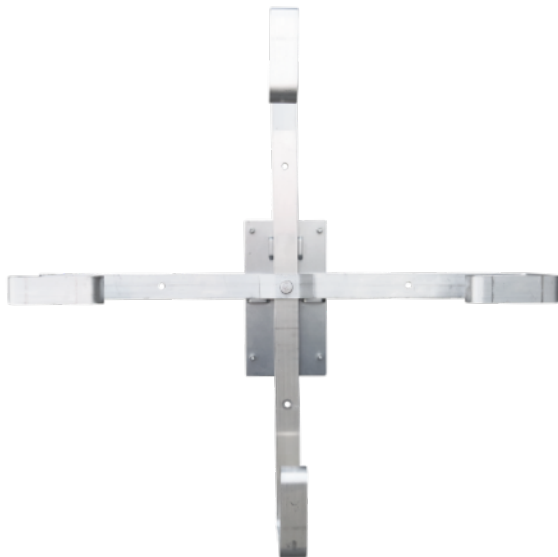
Designed for outdoor installation.

-Made of 30x5mm aluminum flat bar,

-Equipped with a fiber optic cable holder.



Symbol	external dimensions (mm)		
	height	width	depth
<b>ZK-60/60/10 aluminium</b>	600	600	100
<b>ZK-80/80/10 aluminium*</b>	800	800	100



Stelaż zapasu kabla 60/60

## 4-ports Junction box

### DESCRIPTION:

Dedicated to distributing easy access cable on individual building floors.

-The cover allows you to secure the window (up to a maximum of 50 mm) cut in the easy access cable,

-Designed for cables with diameters from Ø8,5mm - 12J to 13,5mm - 48J,

- Material: ABS plastic, it is possible to comply with the UL94-V0 standard,

-Color: white.

Symbol	external dimmensions (mm)		
	height	width	depth
Puszka odgałęźna 4P	67	77	29



Puszka odgałęźna 4P

## 8-ports Junction box

### DESCRIPTION:

Dedicated to distributing easy access cable on individual building floors.

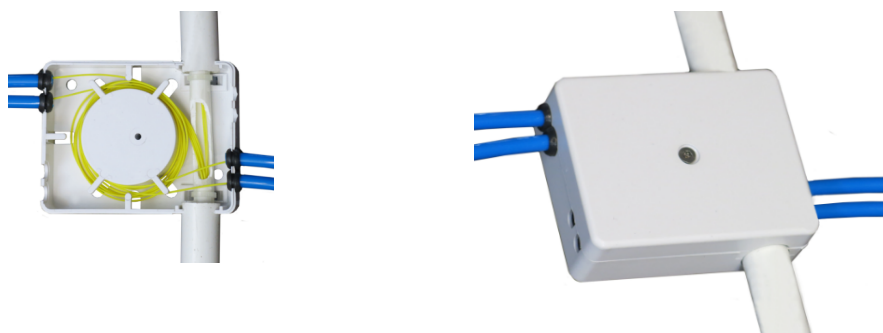
-Enables rigid attachment of the cover to an easy-access Ø 18 cable,

-The cover allows you to secure the window (up to a maximum of 50 mm) cut in the cable for easy access,

-Material: ABS plastic, it is possible to comply with the UL94-V0 standard,

-Color: white.

Symbol	external dimmensions (mm)		
	height	width	depth
Puszka odgałęźna 8P	90,6	70,6	30



Puszka odgałęźna 8P

## Subscriber's Box

### DESCRIPTION:

Optical fiber termination element intended for wall mounting.

- Snap-on cover,
- Has space for fiber storage and the possibility of protecting the mechanical weld,
- Possibility to use 2 SC SX adapters,
- Material: ABS plastic, it is possible to comply with the UL94-V0 standard,
- Color: white.

Symbol	external dimensions (mm)		
	height	width	depth
<b>Puszka abonencka 1P</b>	85	85	24



**Puszka Abonencka**

## Subscriber's Metal Cover

### DESCRIPTION:

The metal cover of the subscriber's box serves to protect the link in places susceptible to damage, e.g. by a vacuum cleaner, children or pets.

- Material: steel sheet 1mm thick,
- White color.

Symbol	external dimensions (mm)		
	height	width	depth
<b>Ostona metalowa puszki abonenckiej*</b>	117	89	18



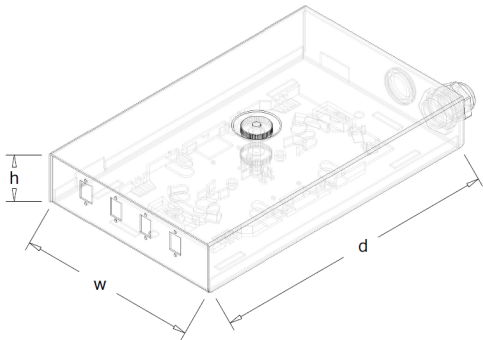
**Ośłona metalowa**



## Mini Fiber-Optic distribution board 8J and 12J

- DESCRIPTION:
- Designed for mounting inside the cabinet.
- Possibility of installing trays for fiber optic splices,
  - Material: steel sheet thickness 1mm,
  - Possibility order with different type and spacing of the holes for adapters.

Symbol	external dimmensions (mm)		
	height	width	depth
PSN 1 4xSX	37	137	220
PSN 1 4xDX	32	111	247
PSN 1 6xSX	32	111	247
PSN 2 6xDX	33	142	279



PSN 1 4xDX



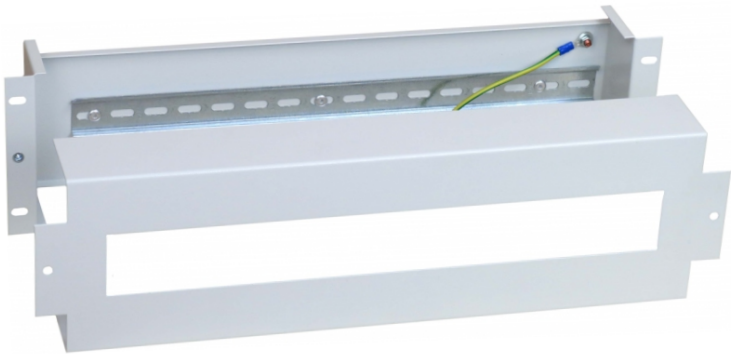
PSN 2 6xDX

Voltage Distribution Panel 19\” 3U

DESCRIPTION:

- Designed for mounting on 19” 3U Rack mounts,
- Can be mounted on the DIN TH 35/7 mounting rail,
- Made of 1 mm thick steel sheet.

Symbol	external dimmensions (mm)		
	height	width	depth
Panel dystrybucji napięć 19” 3U	3U	19”	133



Panel dystrybucji napięć 19”

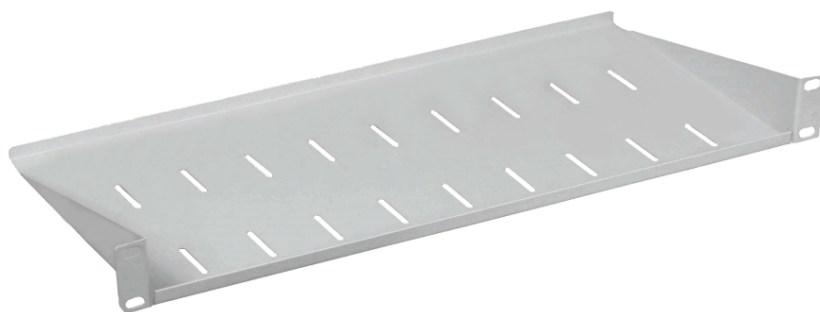
accessories

## 10" and 19" shelves

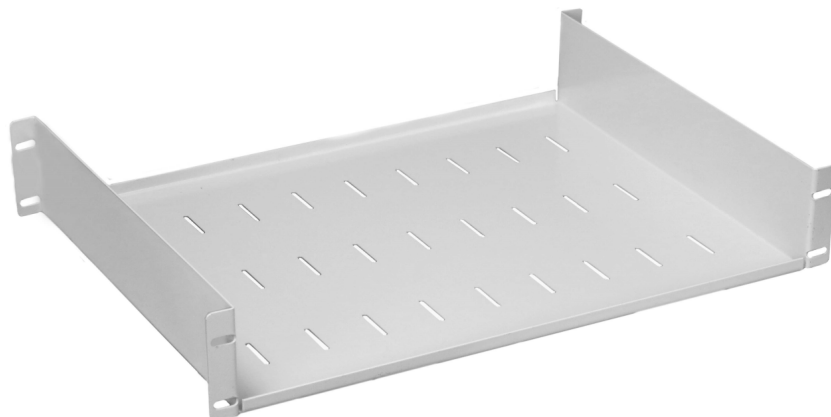
### DESCRIPTION:

- Suitable for mounting in 10 "and 19" cabinets,
- They have holes for fixing devices with cable ties,
- Material: 10" shelf - steel sheet 1,0mm thick, 19" shelf - steel sheet 1,5mm thick.

Symbol	external dimensions (mm)		
	height	width	depth
<b>Półka Rack 10" 1U gł. 150</b>	1U	10"	150
<b>Półka Rack 19" 1U gł. 260*</b>	1U	19"	260
<b>Półka Rack 19" 1U gł. 340*</b>	1U	19"	340



**Półka 19" 1U 260mm**



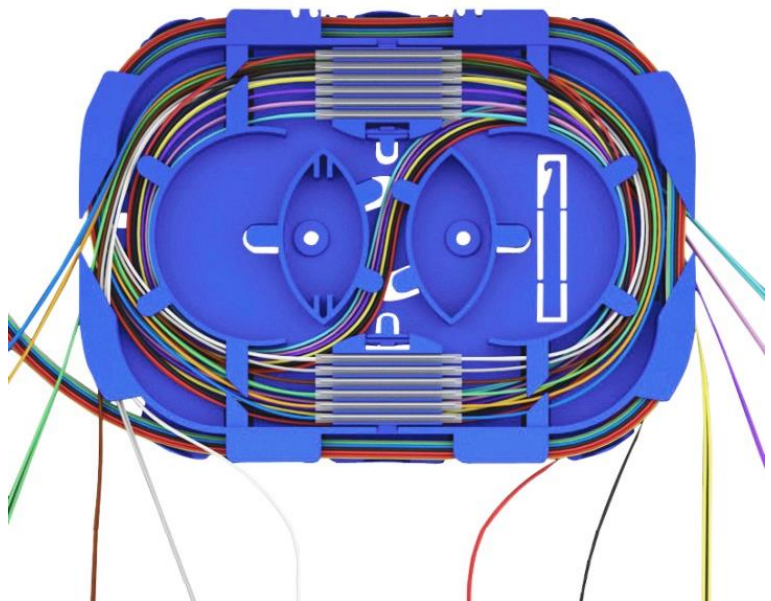
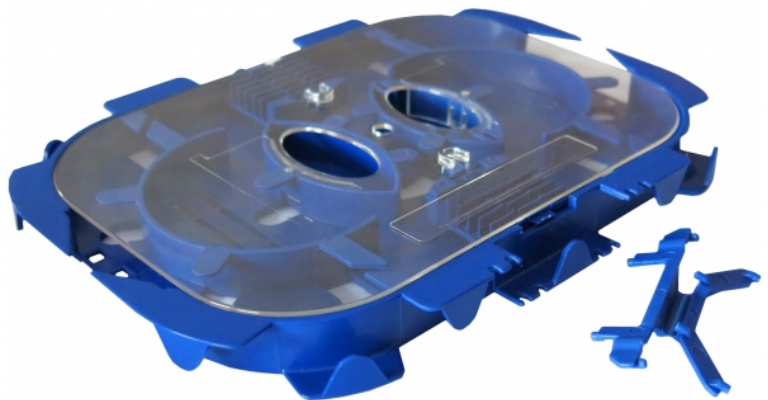
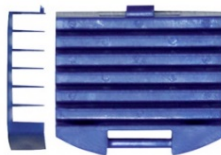
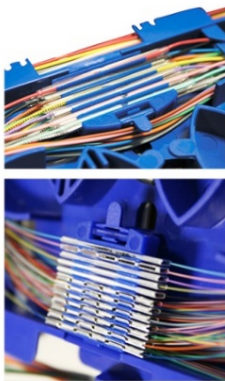
**Półka 19" 1U 340mm do szaf serii SZK**

## Splices Tray (for 24 splices)

### DESCRIPTION:

- Designed for placing and securing casings for optical fiber splices - 24 pieces,
- It is used to attach the welding shield and secure the fiber optic supply,
- It is used for attaching the splices cover and securing the fiber optic reserve,
- The splice cassette consists of a base on which there are movable combs for assembly of weld seams and a cover protecting the fibers from damage,
- The cassettes can be cascaded one on top of the other using a detachable handle.

Symbol	external dimensions (mm)		
	height	width	depth
Tacka spawów światłowodowych	168	124	13



## *alphabetical list cabinets names*

GM-40/40/18.....	50
GM-50/50/20.....	50
Kasetka (moduł) 12 x SC.....	70
Kolumna Alarmowa.....	17
M-40/30/20 ST.....	53
M-40/30/20 WZM.....	52
M-40/40/14 ST.....	53
M-50/50/20 ST.....	53
M-50/50/20 WZM.....	52
M-50/50/30 ST.....	53
M-52/52/16 ST 144J.....	40
M-52/52/16 WZM 144J.....	40
M-58/58/30 ST.....	53
M-58/58/30 WZM.....	52
M-58/70/30 ST.....	54
M-70/58/30 WZM.....	52
M-70/58/30 WZM L.....	52
M-70/58/30 WZM Z.....	52
MZ-62/61/30.....	38
MZ-62/61/30 L.....	38
MZ-62/61/30 Z.....	38
MZ-62/61/30 ZL.....	38
Oslona metalowa puszkii abonenci.....	73
PS 10" 1U 16xDX st.....	62
PS 19" 1U 12xDX st.....	62
PS 19" 1U 12xSX st.....	62
PS 19" 1U 24xDX W bp.....	65
PS 19" 1U 24xDX W np.....	66
PS 19" 1U 24xDX st.....	62
PS 19" 1U 24xSX W np.....	66
PS 19" 1U 24xSX nz.....	63
PS 19" 1U 24xSX st.....	62
PS 19" 1U modul 24J.....	64
PS 19" 2U 48xDX W np.....	66
PS 19" 2U 48xDX st.....	62
PS 19" 2U 48xSX W np.....	66
PS 19" 2U modul 48J.....	64
PS 19" 4U 144xSX W np.....	66
PS 19" 4U modul 192J.....	64
PSN 1 4xDX.....	74
PSN 1 4xSX.....	74
PSN 1 6xSX.....	74
PSN 2 6xDX.....	74
PSN 3 20/20/6.....	46
PSN 4 29/29/10.....	46
PSN-15/20/5.....	45
PSN-25/25/10 PK.....	48
PSN-25/25/10 Z.....	48

## *alphabetical list cabinets names*

PSN-30/30/10 16xSX.....	47
PSN-30/30/10 18xDX.....	47
PSN-A.....	44
PW 1U 19" 4 wentylatory.....	22
Panel dystrybucji napięć 19" 3U.....	75
Panel porządkujący 19"1U.....	69
Pulpit operatorski.....	18
Pulpit operatorski wiszący.....	19
Puszka abonencka 1P.....	73
Puszka odgałęźna 4P.....	72
Puszka odgałęźna 8P.....	72
Półka Rack 10" 1U gł. 150.....	76
Półka Rack 19" 1U gł. 260.....	76
Półka Rack 19" 1U gł. 340.....	76
RSZ-125/18/6 15J.....	29
RSZ-140/44/20 72J.....	33
RSZ-146/18/10 16J.....	30
RSZ-160/18/14 24J.....	31
RSZ-160/18/14 36J.....	32
RSZ-170/60/20 144J.....	34
RSZ-79/18/6 12J.....	14
SM-100/60/60 18U.....	15
SM-40/33/23.....	35
SM-42/55/32 19" 5U.....	36
SM-42/55/32 5U Wt.....	37
SM-42/55/60 5U Wt.....	37
SM-50/55/41 19" 9U.....	36
SM-60/55/50 10U.....	16
SM-64/55/41 19" 12U.....	36
SM-64/55/60 12U Wt.....	37
SM-80/55/45 12U Wt.....	37
SP 19" 15U gł.400.....	51
SP 19" 15U gł.650.....	51
SP 19" 6U gł.600.....	51
SP 19" 9U gł.400.....	51
SP 19" 9U gł.600.....	51
SRS-28/45/12 44J SC DX.....	41
SRS-30/40/13 48J.....	42
SRS-30/53/13 60J.....	43
SRS-30/53/13 96J.....	43
SWS 42U 19" 140x35.....	12
SZK 12U 19".....	24
SZK 18U 19".....	24
SZK 18U 19" (12U+6U).....	13
SZK 18U 19" dual.....	25
SZK 18U 19" z klimatyzatorem.....	27
SZK 24U 19".....	24
SZK 24U 19" (12U+12U).....	26



## *alphabetical list cabinets names*

SZK 30U 19".....	24
SZK 30U 19" (18U+12U).....	26
SZK 30U 19" dual.....	25
SZK 30U 19" z klimatyzatorem.....	27
SZK 36U 192/120/80.....	28
SZK 36U 19" (18U+18U).....	26
SZK 42U 19".....	24
Skrzynka na listy.....	21
TPR-15/15/10.....	56
TPR-15/23/10 L.....	56
TPR-15/23/10 P.....	56
TPR-30/20/10 L.....	57
TPR-30/20/10 P.....	57
TPR-30/30/10 Nt.....	59
TPR-30/30/10 Pt.....	59
TPR-30/30/12 L.....	57
TPR-30/30/12 P.....	57
TPR-30/30/12 S.....	55
TPR-35/55/40 G.....	58
TPR-40/30/16 G.....	58
TPR-40/40/14 G.....	58
TPR-40/60/60.....	20
TPR-50/50/14 G.....	58
TPR-54/34/17 S.....	55
TPR-60/55/40 G.....	58
Tacka spawów światłowodowych.....	77
Uchwyt do słupa 330mm.....	68
Uchwyt do słupa 558mm.....	68
ZK-50/50/20.....	49
ZK-60/60/10 aluminium.....	71
ZK-80/80/10 aluminium.....	71





ul. Kuźniczka 36  
42-152 Opatów  
powiat kłobucki, woj. śląskie  
tel. +48 34 310 06 11,  
tel. kom. +48 692 077 439  
e-mail: [mantar@mantar.com.pl](mailto:mantar@mantar.com.pl)  
<http://www.mantar.com.pl>